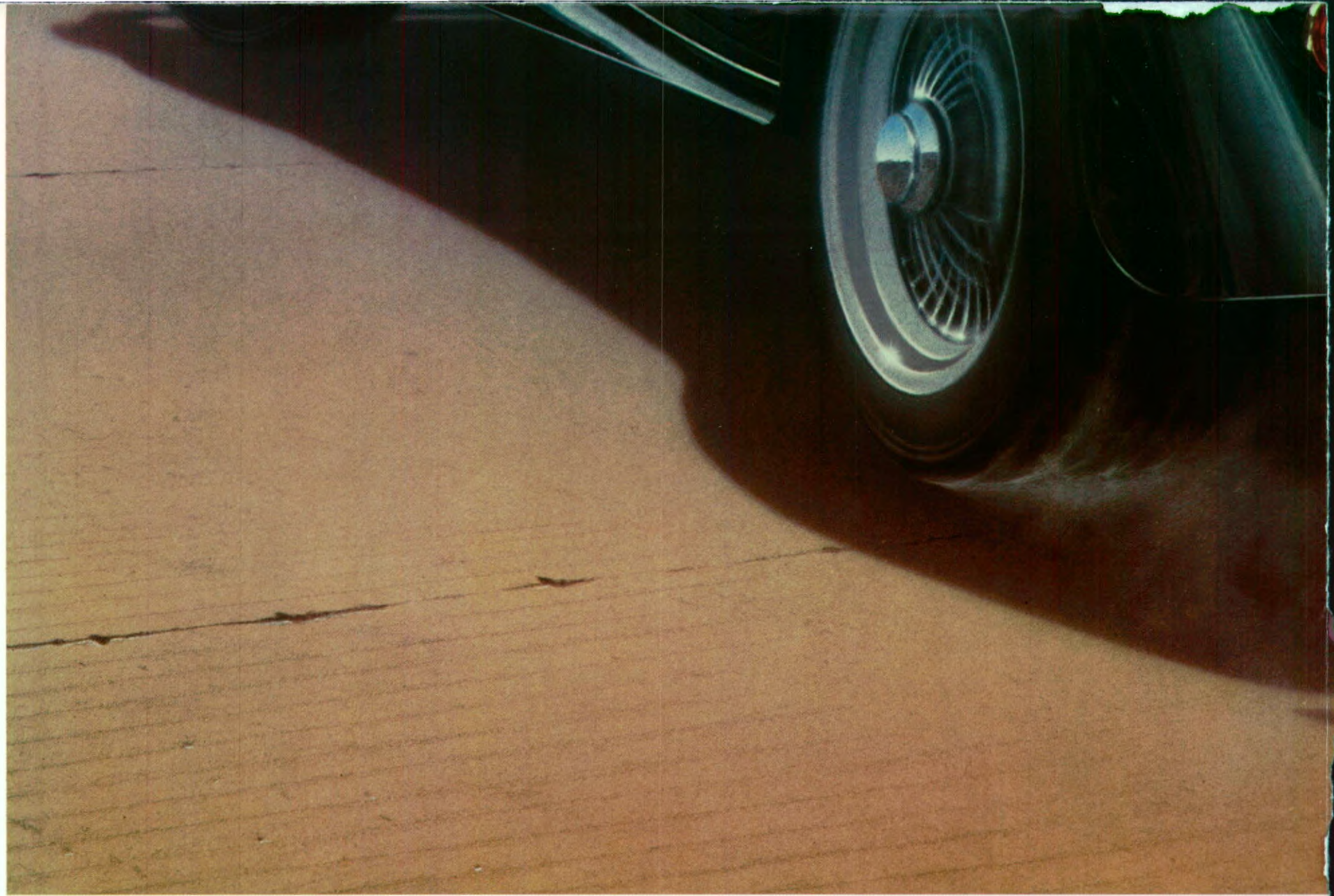
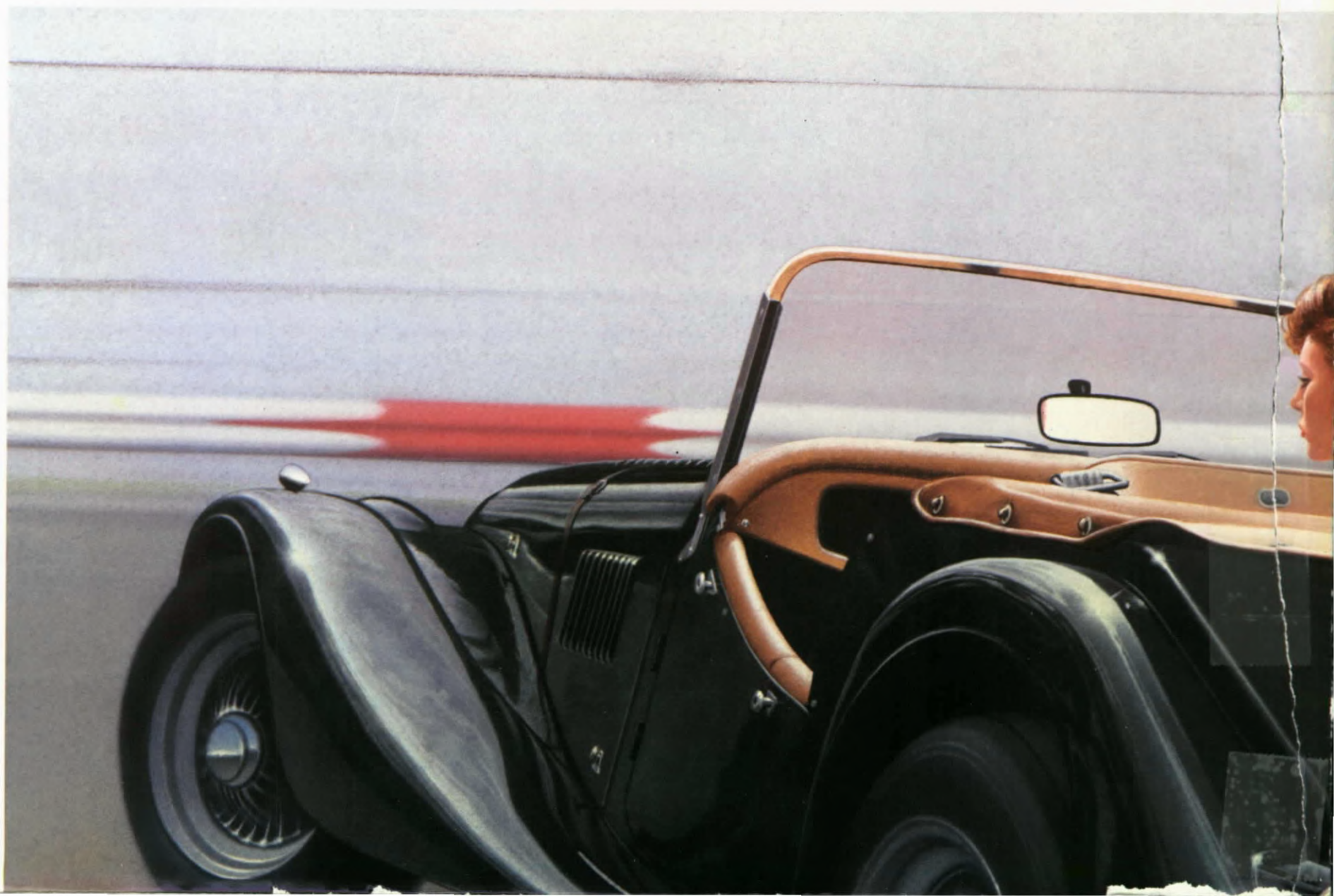


*Morgan*







# Morgan. Four/ Four five and four seater

1600 ENGINE (Ford CVH)

## Specification

Cubic Capacity	1597 cm <sup>3</sup> (97.42 cu ins)
Number of Cylinders	4
Bore and Stroke	79.96 mm x 79.52 mm
Compression Ratio	9.5:1
B.H.P.	96 Din @ 6000 rpm
Maximum Torque	98ft/lb @ 4000 rpm (135 nm)
Valve Gear	Single central O.H.C. Hydraulic Tappets
Carburettor	Single Weber 32/34 DFT twin choke
Petrol Capacity	12½ gallons (56 litres)
Dryweight of Complete Car	2 seater 1624lbs. 735kg. 4 seater 1680lbs. 760kg

**Chassis Frame** - Deep Z-shape section with five boxed or tubular cross members. Easily detachable front end.

**Gearbox** - Five speed and reverse Ford Gearbox. Synchronmesh on all forward gears. Top 5th 0.83; 4th 1:1; 3rd 1.37:1; 2nd 1.97:1; 1st 3.65:1; reverse 3.66:1

**Transmission and Rear Axle** - Propshaft with needle roller bearing universal joints transmits power to the tubular Salisbury rear axle fitted with Hypoid gears ratio 4.1 to 1

**Wheels and Tyres** - Pressed steel rims fixed with four studs. Centre lock wire wheels are an option at extra cost with 5" or 6" wide rims, 175 x 15 or 195/60VR15 tyres.

**Brakes** - Circling hydraulic dual brake system on four wheels. 11" dia. discs on front wheels. 9" x 1¾" drum brakes on rear. Quick release hand brake.

**Steering Gear** - Gemmer. Collapsible column. Steering lock ignition switch. Astrali wheel 15" or 14" diameter, giving 2¼ or 2½ turns lock to lock. Turning circle 32' (10m).

**Suspension** - Front wheels-vertically mounted coil springs on sliding axle pin. Double acting tubular shock absorbers. Semi-elliptical rear springs, fitted at both ends with Silentbloc bushes, and controlled by Armstrong hydraulic dampers.

**Electrics** - Lucas 12 volt equipment; indicators, hazard warning, instrument panel lighting, two-speed wipers, fresh air heater and demister.

**Instruments** - Speedo, rev. counter and warning lights in front of driver, with central steel panel including separate oil, fuel, temp., and volt gauges.



**Bodywork** - Sheet steel or aluminium panels on Cuprinol treated ash wood frame. Zinc plated fixings. Black upholstery (alternative colours and Connolly leather available at extra cost). Detachable tops can be stowed in luggage compartment or behind rear seats in four seater. Rear seatbelts on 4 seater. Laminated windscreen.

**Colours** - Connaught Green, Corsa Red, Indigo Blue, Black or Royal Ivory. Other colours available at extra cost. Black or Cream wing beading can be specified.

**Dimensions(approx)** - Wheelbase 8' (244cm). Track, front 4'(122cm), rear 4'1" (124cm). Length 12'9" (389cm). Width 4'9" (150cm). Ground clearance 7" (18cm). Height, 4/4 two seater 4'3" (129cm), four seater 4'6" (135cm)



# Morgan Plus Eight

## Specification

### VITESSE ENGINE (Rover)

<b>Cubic Capacity</b>	3,528c.c., (215cu.ins.)
<b>Number of Cylinders</b>	8
<b>Bore and Stroke</b>	89 x 71mm, 3.5 x 2.8in.
<b>Compression Ratio</b>	9.75:1
<b>B.H.P.</b>	190 DIN @ 5280 rpm
<b>Maximum Torque</b>	220lb.ft. @ 4000 r.p.m.
<b>Valve gear</b>	O.H.V. pushrod, hydraulic tappets
<b>Fuel supply</b>	Lucas LE Electronic Injection System
<b>Petrol Capacity</b>	13½ gallons (61 litres)
<b>Dryweight of Complete Car</b>	1,826lbs., 828kg

**Chassis Frame** - Deep Z-shape section with five boxed or tubular cross members. Easily detachable front end.

**Gearbox** - Five speed and reverse Rover gearbox. Synchromesh on all forward gears. Top 5th. 0.83:1; 4th. 1:1; 3rd. 1.39:1; 2nd. 2.08:1; 1st. 3.32:1; Reverse. 3.42:1.

**Transmission and Rear Axle** - Propshaft with needle roller bearing universal joints transmits power to tubular Salisbury limited-slip axle with Hypoid gears - ratio 3.31 to 1.

**Wheels and Tyres** - Cast aluminium, 6.5in wide rims fixed with five studs and fitted with 205/60/15 radial tyres.

**Brakes** - Girling hydraulic dual brake system 11" dia. discs on front wheels. 9" x 1¾" drum brakes on rear. Quick release hand brake.

**Steering Gear** - Jack Knight rack and pinion, collapsible column, steering lock ignition switch, leather covered Australi wheel, 15" or 14" dia. giving ¾ or ½ turns lock to lock. Turning circle 38' (11.5m).

**Suspension** - Front wheels-independently sprung by vertical coil springs and telescopic hydraulic shock absorbers. Semi-elliptical rear springs with lever type hydraulic dampers.

**Electrics** - Lucas 12 volt equipment; indicators, hazard warning, instrument panel lighting, two-speed wipers and washer. Twin spotlights and fresh air heater and demister.

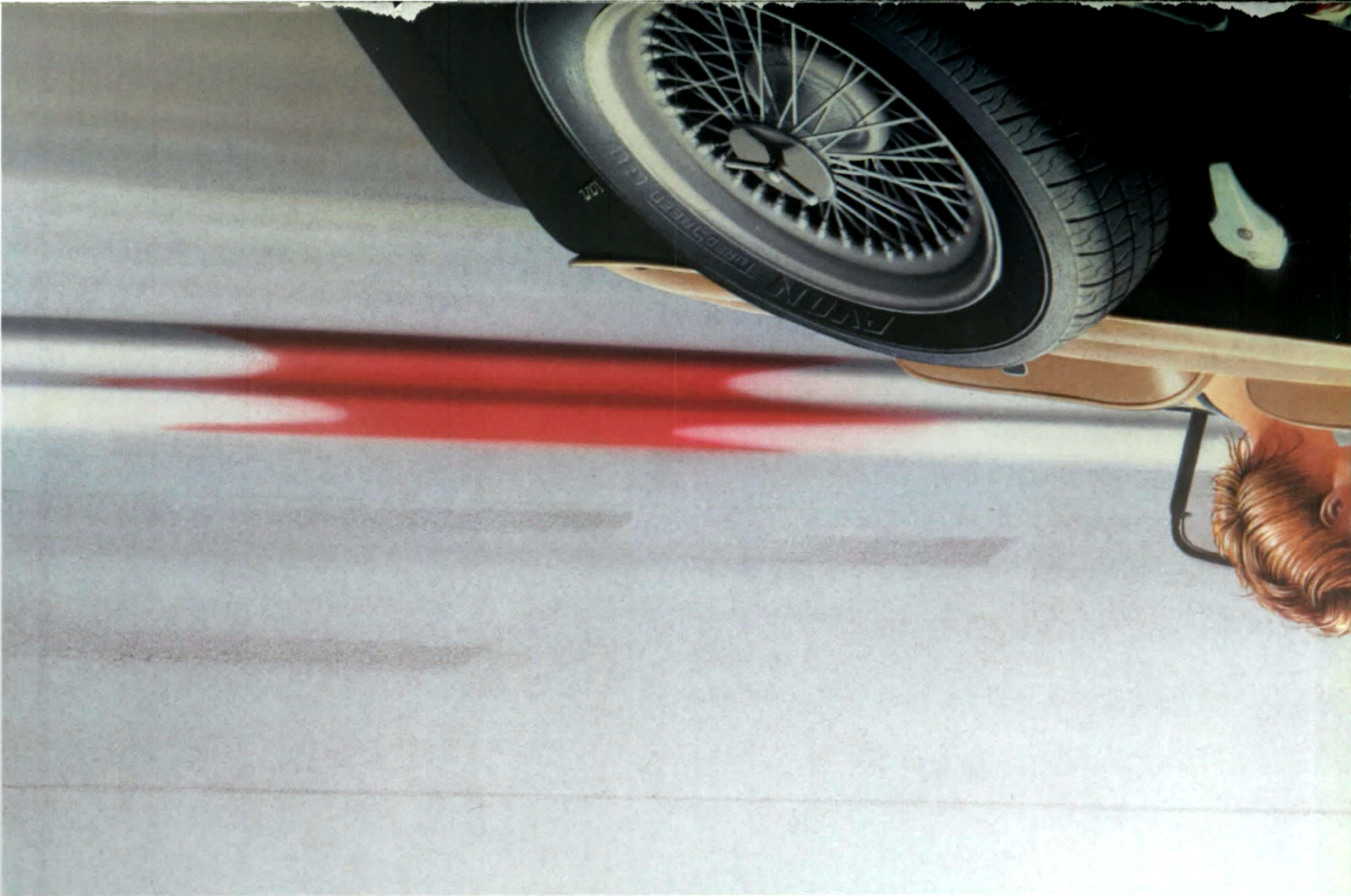
**Instruments** - Speedo, rev. counter and warning lights in front of driver, with central steel panel including separate oil, fuel, temp. and volt gauges.

**Bodywork** - Sheet steel or aluminium panels on Cuprinol treated ash wood frame. Zinc plated fixings. Black upholstery (alternative colours and Connolly leather available at extra cost). Bucket seats with fore and aft adjustment. Detachable hood can be stowed in the 36" x 20" x 12" (92 x 51 x 30.5cm) luggage compartment. Laminated windscreen.

**Colours** - Connaught Green, Corsa Red, Indigo Blue, Black or Royal Ivory. Other colours available at extra cost. Black or Cream wing beading can be specified.

**Dimensions(approx)** - Wheelbase 8'2" (249cm). Track, front 4'5" (135cm); rear 4'6" (138cm). Overall length 13' (396cm). Width 5'3" (160cm). Ground clearance 6" (15cm). Height 4' (122cm).







*Michael English.*

**LONDON****Wykeham Stapleton**

6 Kendrick Place, Reece Mews, London, SW7 3HF 01 589 6894

**F.H. Douglass**

1a South Ealing Road, Ealing, London, W5 4QT 01 567 0570

**Libra Motive Sales Ltd.**

8-10 Rosemont Road, Hampstead, London, NW3 6NE 01 435 8159

**BEDFORDSHIRE****Allon White & Son (Cranfield) Ltd.,**

The Garage, High Street, Cranfield, MK43 0BT (0234) 750205

**SUSSEX****Robin Kay (Motors)**

Marine Road, Eastbourne, BN22 7AU (0323) 26462

**ESSEX****Cliffsea Car Sales**

Bridge Garage, Ness Road, Shoeburyness, SS3 9PG (03708) 5323

**BERKSHIRE****Mike Spence (Reading) Ltd.**

School Green, Shinfield, Reading, RG2 9ED (0734) 883312

**Station Garage**

Station Road, Taplow, Nr. Maidenhead, SL6 0NT (06286) 5353

**WORCESTERSHIRE****Malvern Sports Car Company**

2a Howsell Road, Malvern, WR14 1TH (06845) 63767

**WEST MIDLANDS****Heart of England Morgans**

Station Garage, Mucklow Hill, Halesowen, B63 3JP (021) 550 3111

**WILTSHIRE****Burlen Services**

Spitfire House, Castle Road, Salisbury, SP1 3SA (0722) 21777

**AVON****John Dangerfield Garages**

115 Staplehill Road, Fishponds, Bristol, BS16 5AD (0272) 566525

**DEVON****Phoenix Motors**

The Green, Woodbury, Exeter, EX5 1LT (0395) 32255

**MERSEYSIDE****Lifes Motors Ltd.**

32-36 West Street, Southport, PR8 1QN (0704) 31375

**CHESHIRE****Sports Motors (Hale) Ltd.**

214-216 Ashley Road, Hale, Altrincham, WA15 9NQ (061) 928 8143

**YORKSHIRE****Otley Motors Ltd.**

Cross Green, Otley, West Yorkshire, LS21 1HE (0943) 465222

**CO. DURHAM****I. & J. Macdonald Ltd.**

Maiden Law Garage, Lanchester, DH7 0QR (0207) 520916

**SCOTLAND****Parker Bros. (Stepps) Ltd.**

63 Cumbernauld Road, Stepps, Glasgow, G33 6LS 041 779 2271

**AUSTRALIA****Calder Sports Car Dist. Pty Ltd.**

Box 140, P.O. Gisborne, 3437 Victoria

**AUSTRIA****Max Bulla**

Liebenstr. 40/6/15, A1120 Wien

**BELGIUM****Garage Albert**

Anc ets Stammel et Fils S.P.R.L., 84-86 Rue Ossegemstraat, 1080 Bruxelles

**CANADA****Sterne Motors**

3785 Edinburgh Street, Burnaby B.C., V5C 1R4

**C.M.C. Enterprises**

41 River Road East, Kitchener, Ontario, N2B 2G3

**DENMARK****Torben Krogh**

Toppen 26, 7120 Vejle

**FRANCE****Jacques Savoye s.a.**

237 Boulevard Pereire, 75017 Paris

**GERMANY****K.W. Flaving**

475 Unna, Hochstrasse 4

**Merz & Pabst**

Alexanderstrasse 46, 7000 Stuttgart 1

**HOLLAND****B.V. Nimag**

Reedijk 9, 3274 KE Heineoord

**ITALY****Dilia**

16145 Via C.N. Rosselli 18-20, Genova

**Ditta**

Armando Anselmo, Automobili Sportive Inglesi, 00191 Roma

**JAPAN****Morgan Auto (Takano)**

2064-8 Tsumada, Atsugi Shi, Kanagawa 243

**LUXEMBOURG****Yesteryear Luxembourg Ltd. s.a.**

19 Rue Du Parc, Bertrange

**NORWAY****Oslo Bil A/S**

Grensevn 73, Oslo 6

**PORTUGAL****Manuel F. Monteiro**

Rua dos Correiros 71, 1100 Lisboa

**SINGAPORE****Gulfcast Marketing Services PTE Ltd.**

3 Shenton Way, 25-01 Shenton House, Singapore 0106

**SPAIN****Tayre s.a.**

General Mola 253, Madrid 16

**SOUTH AFRICA****Angela Heinz (Pty) Ltd**

6 The Munro Drive, Houghton, Johannesburg

**SWEDEN****A.B. Wendels Bil & Motor**

Box 74, Testvagen 10A, 23200 Arlov

**SWITZERLAND****Rolf Wehrin**

Hauptstrasse 132, Aesch BL

**U.S.A.****Isis Imports Ltd.**

P.O.Box 2290, U.S. Custom House, San Francisco, California 94126

**Cantab Motors Ltd.**

1802 Summit Drive, Haymarket, VA 22069

**Morgan Motor Co. Ltd.**

Malvern Link, Worcestershire, England

Telephone: Malvern 3104/5





*Morgan*



*As the world's oldest privately owned motor company we are proud of the skill that goes into building a Morgan.*



*With its ash hardwood frame giving it strength and durability, the car can truly be called coachbuilt and it is this combination of the traditional with the modern that makes it a particularly demanding car to manufacture.*

*From start to finish attention to detail is paramount. It takes a special knowledge to choose the right piece of ash for a section of the frame (there are 72 of them); a particular skill to wire metal to create a perfectly smooth edge; an experienced touch to*



*handspray paint evenly over a Morgan's complex curves.*



*That is why our training has to be so rigorous and why every individual takes pride in giving you what you want, dependable, honest quality.*

*Our commitment is evidenced in the way we welcome owners to witness their car's progress. For us, a Morgan's serial number is, without doubt, the signature of the people who built it.*







*Beneath a Morgan's classic exterior lies an engine with all the advantages of the latest in electronic fuel injection systems, catalytic convertors and evaporative control.*

*The result is a range of cars with more torque at lower revs, better fuel economy and lower emissions — just as you would expect of a car born in the Malvern Hills.*

*As well as an increase in useable performance, the ride and handling of the cars have been improved with new springs and specially developed gas filled shock absorbers. Together with a Morgan's hallmarks of lightweight body, perfect weight distribution and low centre of gravity this produces a unique driving experience.*

*Morgan drivers have their own words to describe what makes this special to them - the feeling of connecting with the car, unrivalled responsiveness, driving by the seat of your pants are just a few. Quotes from some recent articles bring this experience to life;*

"There's instant grunt available from very low revs in any gear, so though it's almost impossible to resist using that short throw, lightning quick gearchange just to listen to the engine changing note, the Plus 8 will pull hard out of corners in any gear."

HOWARD LEES, PERFORMANCE CAR

"More compelling still is the Mog's visceral power - it pulls with stout reserve in any gear from idle, but its mid range thrust is absolutely eye-widening, and counter-pointed by a potent, thrashing V8 beat. The old Buick motor may now sing through a pair of catalyts, but it doesn't miss a single note let alone an entire key."

RICHARD BREMNER, CAR MAGAZINE

"... as my companion changed up through the gears I felt a rush of adrenalin that I can only liken to the thrill of the Big, and I mean really Big-Dipper. And this is the point of a Morgan. You connect with the car, every pot hole is an adventure - it feels great."

ALETHEA SAVILE, SQUARE MILE

"The secret of the Morgan's success and the lesson for many of us is surely that it is everything it seems to be. There is no faking, no fudging, no pandering to passing popularity. This is really rather more than just a car: it is a statement on wheels, of which the founder's father would have approved. It is genuine, uncomplicated, ideally straightforward ..."

JAMES LEASOR, LLOYDS LOG

"I have been priviledged to drive historic cars all over the world but nothing compares with the thrill of this one."

LORD MONTAGU OF BEAULIEU, DAILY TELEGRAPH

*They all add up to one thing — to drive a Morgan is to drive a real sports car.*

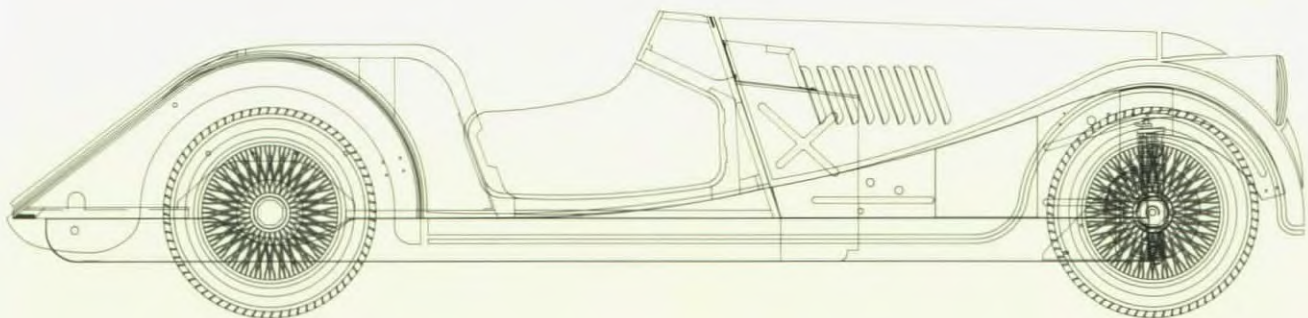


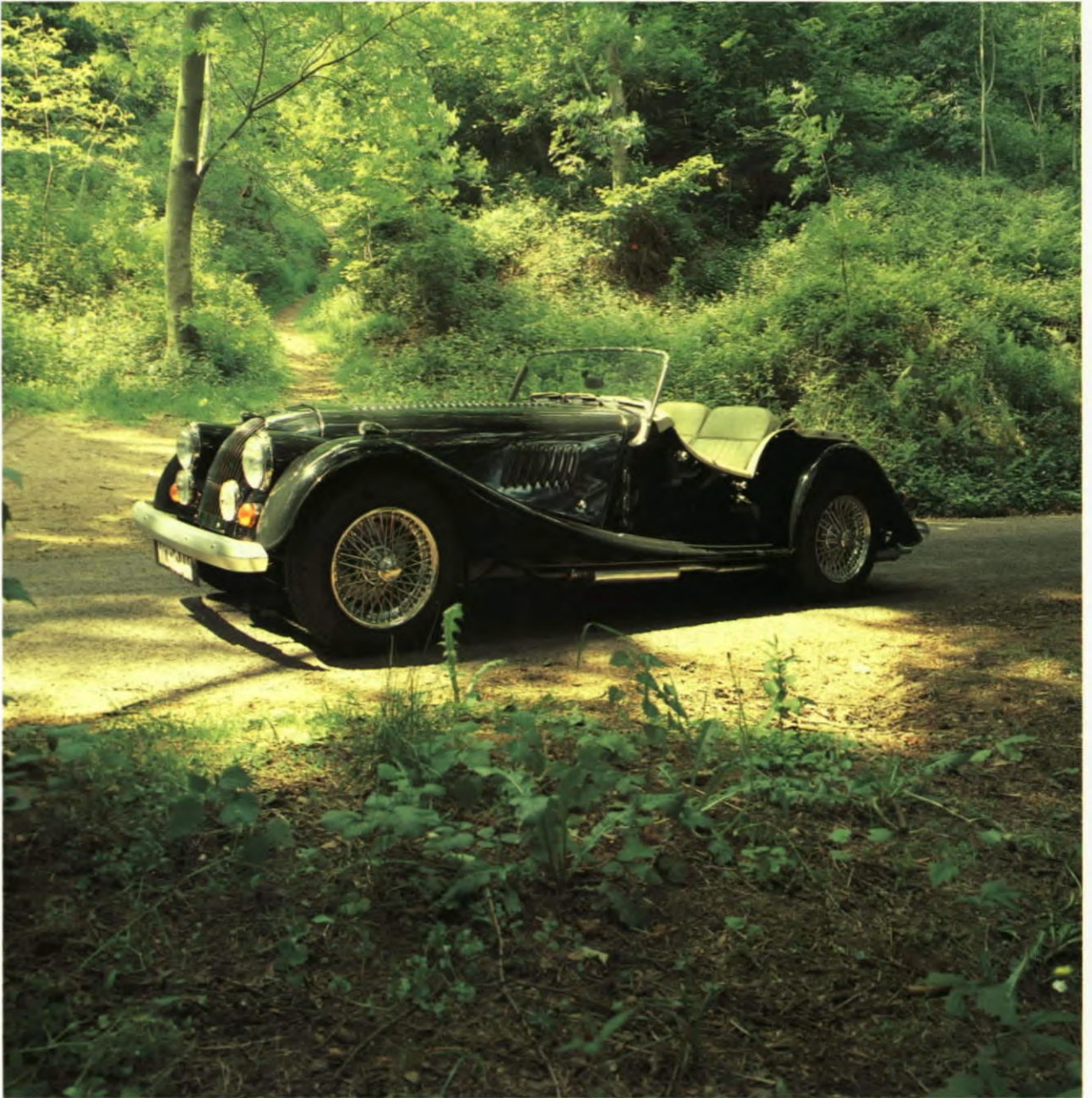


# The Morgan Four Four

The Morgan range starts with the Four Four. Originally the name signified four wheels and four cylinders at its introduction in 1936. The latest version of the world's longest running production model\* provides a good introduction to the Morgan experience. There is a four seater version as well as the two seater and both are equipped with handsome wire wheels.

CUBIC CAPACITY	1598cc
NO. OF CYLINDERS	4
BORE AND STROKE	80 x 79.5
COMPRESSION RATIO	9.75:1
BHP	76 kW at 6000 RPM
MAXIMUM TORQUE	135 NM at 2800 RPM
VALVE GEAR	Ohc, Hydraulic tappets.
FUEL SUPPLY	Electronic programmed fuel injection.
PETROL CAPACITY	12.5 gallons (56 litres) 2 seater, 10 gallons (45.5 litres) 4 seater.
DRY WEIGHT OF COMPLETE CAR	868 kg 2 seater, 920 kg 4 seater.
FUEL CONSUMPTION	Average 30 MPG
EXHAUST SYSTEM	Twin down pipe in stainless steel feeding a catalyst with Hego sensor into single system.
EVAPORATIVE SYSTEM (when fitted)	Petrol vapour and fumes are contained in a sealed and controlled system leading to a charcoal cannister before reaching the atmosphere.
GEARBOX	Five speed and Reverse (Ford) gearbox. Synchromesh on all forward gears. Top 5th 0.83:1, 4th 1:1, 3rd 1.37:1, 2nd 1.97:1, 1st 3.65:1, Reverse 3.66:1.
CHASSIS FRAME	Deep Z-shape section with five boxed or tubular cross members. Easily detachable front end.
TRANSMISSION AND REAR AXLE	Propshaft with needle roller bearing universal joints transmits power to tubular Salisbury axle with hypoid gears ratio, 4.1:1.
BRAKES	Girling hydraulic dual brake system 11" dia. Discs on front wheels, 9" x 1.75" drum brakes on rear. Fly-off hand brake.
STEERING GEAR	Gemmer recirculating ball, collapsible column, steering lock ignition switch, wheel, 15" or 14" dia. Giving 2.25 turns lock to lock. Turning circle 32' (10m).
SUSPENSION	Front wheels - independently sprung by vertical coil springs and gas filled telescopic shock absorbers. Semi-elliptical rear springs with lever type hydraulic dampers.
ELECTRICS	Lucas 12 volt equipment, indicators, hazard warning, instrument panel lighting, three two-speed wipers, washer and fresh air heater and demister.
INSTRUMENTS	Speedo, rev. counter and warning lights in front of driver, with central steel panel including separate oil, fuel, temp. and volt gauges.
BODYWORK	Sheet steel or aluminium panels on Cuprinol treated ash hardwood frame. Zinc plated fixings. Black upholstery (alternative colours and Connolly leather available at extra cost). Bucket seats with fore and aft adjustment. Reclining seats standard on 4 seater, available for 2 seater. Detachable hood can be stowed in the 26" x 20" x 12" (92 x 51 x 30.5cm) luggage compartment. Laminated windscreen. Tonneau cover. Walnut dashboard available at extra cost.
COLOURS	Connaught green, red, indigo blue, black or royal ivory. For a small extra cost 35,000 others available. Black, red or cream wing beading can be specified.
WHEELS AND TYRES	Centre lock wire wheels on Rudge hubs with 5" or 6" wide rims. 165 SR 15 or 195 60VR15 tyres.
DIMENSIONS (approx)	Wheelbase 8' (244cm) Track, Front 4' (122cm) Rear 4'1" (124cm) Length 12'9" (389cm) Width 4'9" (150cm). Ground Clearance 6" (15cm) Height Two Seater 4'4" (129cm), Four Seater 4'6" (135cm).

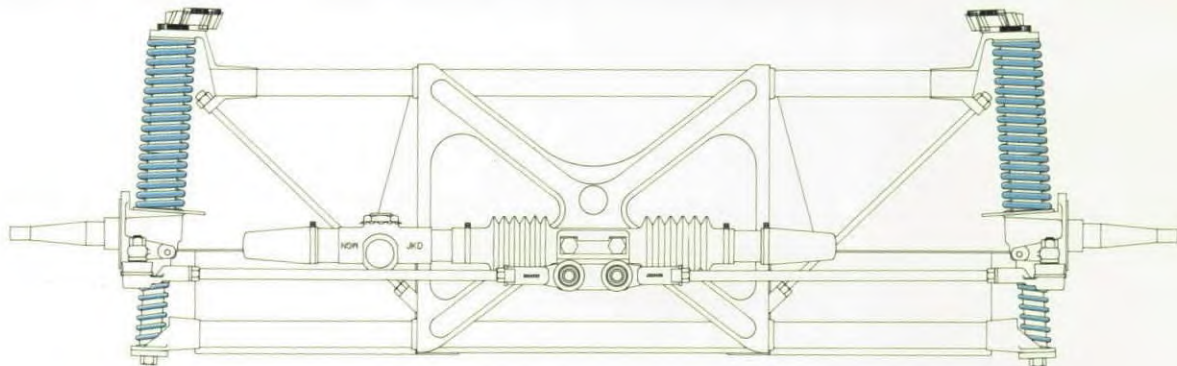




# The Morgan Plus Four

The Morgan Plus Four recalls to mind the well-known model that was so successful racing in the 1950's and 60's in the 2 litre class. The new Plus Four also has a 2 litre engine now fitted with an aluminium twin camshaft multi-valve cylinder head. The engine won a Design Council award for its lean-burn technology. The car has wide "Cobra" style wire wheels and 2 or 4 seater bodywork. As the car is low slung with a wide track the handling and road holding are excellent.

CUBIC CAPACITY	1994cc
NO. OF CYLINDERS	4
BORE AND STROKE	84.5 x 89.0
COMPRESSION RATIO	10.0:1
BHP	103 kW at 6000 RPM
MAXIMUM TORQUE	178 NM at 4500 RPM
VALVE GEAR	dohc, 4 valves per cylinder.
FUEL SUPPLY	Programmed ignition and multi-point fuel injection.
PETROL CAPACITY	12.5 gallons (56 litres) 2 seater, 10 gallons (45.5 litres) 4 seater
DRY WEIGHT OF COMPLETE CAR	910 kg 2 seater, 980 kg 4 seater.
FUEL CONSUMPTION	Average 30 MPG
EXHAUST SYSTEM	Twin down pipe in stainless steel feeding a catalyst with Lamda sensor or twin down pipe to single system.
EVAPORATIVE SYSTEM (fitted with catalyst)	Petrol vapour and fumes are contained in a sealed and controlled system leading to a charcoal cannister before reaching the atmosphere.
GEARBOX	Five speed and Reverse (Rover) gearbox. Synchromesh on all forward gears. Top 5th 0.79:1, 4th 1:1, 3rd 1.39:1, 2nd 2.08:1, 1st 3.32:1, Reverse 3.42:1.
CHASSIS FRAME	Deep Z-shape section with five boxed or tubular cross members. Easily detachable front end.
TRANSMISSION AND REAR AXLE	Propshaft with needle roller bearing universal joints transmits power to tubular Salisbury axle with hypoid gears ratio, 3.73:1.
BRAKES	Girling hydraulic dual brake system 11" dia. Discs on front wheels. 9" x 1.75" drum brakes on rear. Fly-off hand brake.
STEERING GEAR	Jack Knight rack and pinion or Gemmer recirculating ball, collapsible column, steering lock ignition switch, wheel, 15" or 14" dia. Giving 2.25 or 3.5 turns lock to lock. Turning circle 32' (10m).
SUSPENSION	Front wheels - independently sprung by vertical coil springs and gas filled telescopic shock absorbers. Semi-elliptical rear springs with gas filled telescopic shock absorbers or lever type hydraulic dampers.
ELECTRICS	Lucas 12 volt equipment, indicators, hazard warning, instrument panel lighting, three two-speed wipers, washer, and fresh air heater and demister.
INSTRUMENTS	Speedo, rev. counter and warning lights in front of driver, with central steel panel including separate oil, fuel, temp, and volt gauges.
BODYWORK	Sheet steel or aluminium panels on Cuprinol treated ash hardwood frame. Zinc plated fixings. Black upholstery (alternative colours and Connolly leather available at extra cost). Bucket seats with fore and aft adjustment. Reclining seats standard on 4 seater, available for 2 seater. Detachable hood can be stowed in the 26" x 20" x 12" (92 x 51 x 30.5cm) luggage compartment. Laminated windscreen. Tonneau cover. Walnut dashboard available at extra cost.
COLOURS	Connaught green, red, indigo blue, black or royal ivory. For a small extra cost 35,000 others available. Black, red or cream wing beading can be specified.
WHEELS AND TYRES	Centre laced 6x15" centre locking wire wheels on Rudge hubs fitted with Avon turbo speed radial tyres of 195 60VR15
DIMENSIONS (approx.)	Wheelbase 8' (244cm) Track, Front 4'2.5" (128cm) Rear 4'3.5" (131cm) Length 12'9" (389cm) Width 4'9" (150cm) Ground Clearance 5" (13cm) Height 2 Seater 4'2" (127cm), 4 Seater 4'4" (130cm).



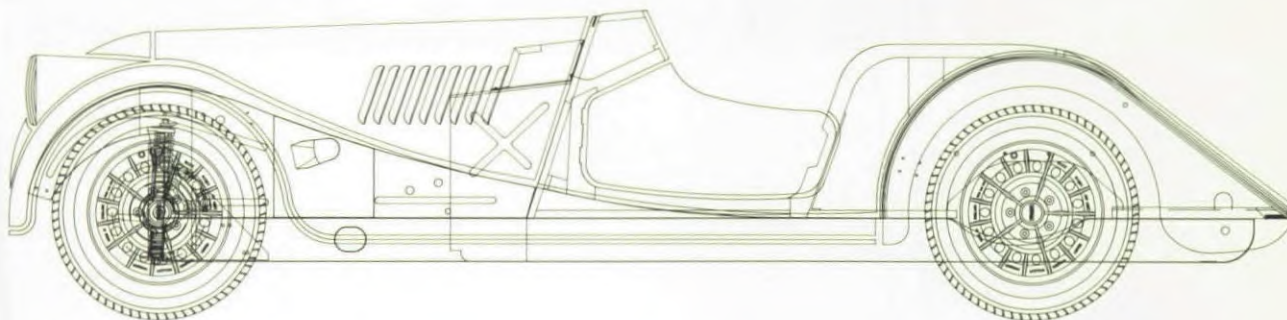




# The Morgan Plus Eight

At the top of the range is the Plus Eight. In continuous production since 1969 the Plus Eight storms to 60 in just over 5 seconds and is the world's champion for flexibility of performance (fastest production car from 80-120kph in 5th gear\*). This superior performance is achieved by a combination of light weight and high torque output from an all aluminium 3.9 litre V8 engine. The Plus Eight is immensely versatile, as happy in city traffic as on a country road. Safe performance is aided by the car's perfect balance, large diameter disc brakes, competition derived steering and wide cast aluminium wheels.

CUBIC CAPACITY	3946
NO. OF CYLINDERS	8
BORE AND STROKE	94.00 x 71.12
COMPRESSION RATIO	9.35:1
BHP	140 kW at 4750 RPM
MAXIMUM TORQUE	312 NM at 2600 RPM
VALVE GEAR	OHV Pushrod, Hydraulic tappets.
FUEL SUPPLY	Lucas "Hotwire" Electronic Injection System.
PETROL CAPACITY	12 gallons
DRY WEIGHT OF COMPLETE CAR	940 kg
FUEL CONSUMPTION	Average 25 MPG
EXHAUST SYSTEM	Twin Down Pipes in Stainless Steel feeding two catalyts with Lamda sensors or Twin Down Pipes feeding both sides of car with balance tube.
EVAPORATIVE SYSTEM (fitted with catalyst)	Petrol vapour and fumes are contained in a sealed and controlled system leading to a charcoal canister before reaching the atmosphere.
GEARBOX	Five speed and Reverse. Synchromesh on all forward gears. Top 5th 0.79:1, 4th 1:1, 3rd 1.39:1, 2nd 2.08:1, 1st 3.32:1, Reverse 3.42:1.
CHASSIS FRAME	Deep Z-shape section with five boxed or tubular cross members. Easily detachable front end.
TRANSMISSION AND REAR AXLE	Propshaft with needle roller bearing universal joints transmits power to tubular Salisbury limited slip axle with hypoid gears ratio 3.31 to 1.
BRAKES	Girling hydraulic dual brake system 11" dia. Discs on front wheels. 9" x 1.75" drum brakes on rear. Fly-off hand brake.
STEERING GEAR	Jack Knight rack and pinion or Gemmer recirculating ball, collapsible column, steering lock ignition switch, wheel 15" or 14" dia. Giving 2.25 or 3.5 turns lock to lock. Turning circle 38' (11.5m).
SUSPENSION	Front wheels - independently sprung by vertical coil springs and gas filled telescopic shock absorbers. Semi-elliptical rear springs with gas filled telescopic shock absorbers.
ELECTRICS	Lucas 12 volt equipment, indicators, hazard warning, instrument panel lighting, three two-speed wipers, washer, twin spot-lights and fresh air heater and demister.
INSTRUMENTS	Speedo, rev. counter and warning lights in front of driver, with central steel panel including separate oil, fuel, temp, and volt gauges.
BODYWORK	Sheet steel or aluminium panels on Cuprinol treated ash hardwood frame. Zinc plated fixings. Black upholstery (alternative colours and Connolly leather available at extra cost). Bucket seats with fore and aft adjustment. Reclining seats available. Detachable hood can be stowed in the 26" x 20" x 12" (92 x 51 x 30.5cm) luggage compartment. Laminated windscreen. Tonneau cover. Walnut dashboard available at extra cost.
COLOURS	Connaught green, red, indigo blue, black or royal ivory. For a small extra cost 35,000 others available. Black, red or cream wing beading can be specified.
WHEELS AND TYRES	Cast aluminium 6.5" wide rims fixed with five studs and fitted with 205/60VR15 Radial tyres.
DIMENSIONS (approx)	Wheelbase 8'2" (249cm) Track, Front 4'5" (134.5cm) Rear 4'6" (137.5cm) Overall length 13' (396cm) Width 5'3" (160cm) Ground Clearance 5.5" (14cm) Height 4' (122cm).





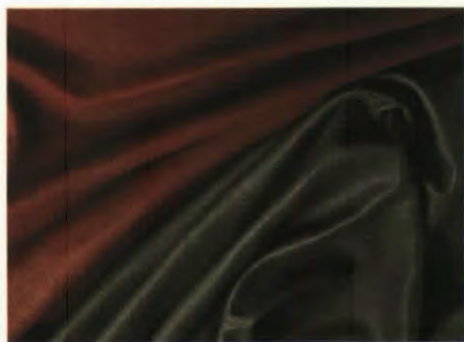


*Whichever model you choose, you can rest assured that we are committed to giving you the quality, choice and after sales service you need.*

*This means supplying you with a car built*

*to our exacting standards of engineering and coachbuilding as well as assuring you of strict quality control at every stage of manufacture.*

*When it comes to the look of your car, we believe in offering you as much choice as*



*your car personal to you.*

*We promise to provide you with an efficient and friendly after sales service (spare parts can be despatched speedily anywhere in the country or worldwide) and, at the factory itself, we can undertake any necessary repairs, a first service or even a complete rebuild. We are also a useful source of advice should you need it.*

*After all, buying and owning a Morgan should be fun and at the Morgan Motor Company we do everything we can to make it that way.*



*possible. We offer an overwhelming range of paint finishes (around 35,000), a variety of options for the car's trim, hood and tonneau and specification (steel or alloy body for example), so you can make*





# ORDERING A MORGAN

*All our representatives take orders and offer a complete after sales service.*

*Those marked with a star may have secondhand Morgans in stock.*

## U.K. DISTRIBUTORS



### LONDON

\*Wykehams Limited  
6 Kendrick Place, Reece Mews,  
South Kensington SW7 3HF  
071-589 6894/8309

F.H. Douglass  
1a South Ealing Road, Ealing W5 4QT  
081 567 0570

\*Libra Motive Limited  
2 Rosemont Road, Hampstead NW3 6NE  
071-435 8159/794 7009

### BEDFORDSHIRE

\*Allon White & Son Ltd  
The Morgan Garage  
High Street, Cranfield, Beds  
MK43 0BT  
(0234) 750205

### SUSSEX

Robin Kay & Sons  
Marine Road, Eastbourne  
BN22 7AU  
(0323) 26462/25563

### ESSEX

Cliffsea Car Sales  
Bridge Garage, Ness Road, Shoeburyness  
SS3 9PG  
(0702) 295323

### BERKSHIRE

Mike Spence  
Classic Cars Ltd  
Unit 1, Bloomfield Hatch, Mortimer,  
Reading  
RG7 3AD  
(0734) 333633

### \*Station Garage

Station Road, Taplow, Nr. Maidenhead  
SL6 0NT  
(06286) 605353

### KENT

\*Brands Hatch Morgans  
Brands Hatch Circuit  
Fawkham, Kent  
DA3 8NG  
(0474) 874147

### WEST MIDLANDS

\*Mike Duncan  
250 Ikon Estate, Droitwich Road  
Hartlebury, Worcs  
DY10 4EU  
(0299) 250025

### WILTSHIRE

\*Burlen Services  
Spitfire House, Castle Road, Salisbury  
SP1 3SA  
(0722) 412500

### AVON

\*John Dangerfield Garages Ltd  
Staplehill Road, Fishponds, Bristol  
BS16 5AD  
(0272) 566525/566373

### DEVON

\*Phoenix Motors  
The Green, Woodbury, Exeter  
EX5 1LT  
(0395) 32255

### LANCASHIRE

\*Lifes Motors Ltd  
West Street, Southport  
PR8 1QN  
(0704) 531375

### CHESHIRE

Donaldson and Evans  
The Wolf Garage  
Ashley Road, Hale, Cheshire  
WA15 9NQ  
(061) 9291208 Sales  
(061) 9411916 Service & Admin

### YORKSHIRE

Otley Motors  
Cross Green, Otley, West Yorks  
LS21 1HE  
(0943) 465222

### CO DURHAM

\*I & J Macdonald Ltd  
Maiden Law Garage, Lanchester  
DH7 0QR  
(0207) 520916

### SCOTLAND

Parker of Stepps,  
Hayston Garage  
38 Glasgow Road, Kirkintilloch  
Glasgow G66 1BJ  
(041) 776 1708

Thomson & Potter Ltd  
High Street, Burrelton, Blairgowrie,  
Perthshire  
PH13 9NX  
(08287) 247

### SERVICE FACILITY

Andreas Adamou, Autorapide, Unit 1  
Whitehouse Farm, Cocklake, Wedmore,  
N Somerset BS28 4HE  
0934 713224

## OVERSEAS DISTRIBUTORS



AUSTRALIA  
Calder Sports Car  
Distributors Australia Pty Ltd  
Box 140 PO  
Gisborne 3437, Victoria



AUSTRIA  
Max Bulla  
Liebenstr 40/6/15  
A1120 Wien



BELGIUM  
Garage Albert  
Anc Ets Stammel Et Fils  
S.P.R.L.  
84/86 Rue Osseghestraat  
1080 Brussels



CANADA  
CMC Enterprises (1990) Inc.  
RR3 Bolton  
Ontario  
L7E 5R9



CYPRUS  
Reliable Sports Cars Ltd  
Grivas Digenis Ave  
P.O. Box 5428  
Nicosia



DENMARK  
Alan Hall  
Mollegardsvej 16  
GL Hjortkaer  
DK-6818 ARRE



FRANCE  
Jacques Savoye S.A.  
237 Boulevard Pereire  
75017 Paris





GERMANY  
Merz & Pabst  
Alexanderstrasse 46  
7000 Stuttgart 1



LUXEMBOURG  
Yesteryear Luxembourg  
Import Ltd SA  
19 Rue Du Parc  
L-8083 Bertrange



SOUTH AFRICA  
Angela Heinz  
(Pty) Ltd  
6 The Munro Drive  
Houghton 2198  
P.O. Box 2687  
Johannesburg 2000

K.W. Flaving  
4750 Unna  
Hochstrasse 4



NORWAY  
Hallan AS  
Malmøgt 7  
0566 Oslo 5



SWEDEN  
A.B. Wendels Bil & Motor  
Box 74 Testvagen 10A  
S-23200 Arlov



HOLLAND  
B.V. Nimag  
Reedijk 9 3274 Ke  
Heine Noord



IRELAND  
Scott Macmillan  
Holybrooke Hall  
Kilmacanogue  
Co. Wicklow



PORTUGAL  
Manuel F Monteiro & Filho  
Representacoes e Comercio LDA  
Rua Dos Correiros 71  
1100 Lisboa



SWITZERLAND  
Garage De L'Autoroute  
Signy S/Nyon

Rolf Wehrlin  
Hauptstrasse 132  
Aesch BL



ITALY  
Ditta  
Armando Anselmo  
Via Vincenzo Tiberio 64  
00191 Roma



SPAIN  
Tayre S.A.  
Principe de Vergara 253 28016  
Madrid



UNITED STATES OF AMERICA  
Isis Imports Ltd  
P.O. Box 2290  
U.S. Custom House  
San Francisco, California 94126



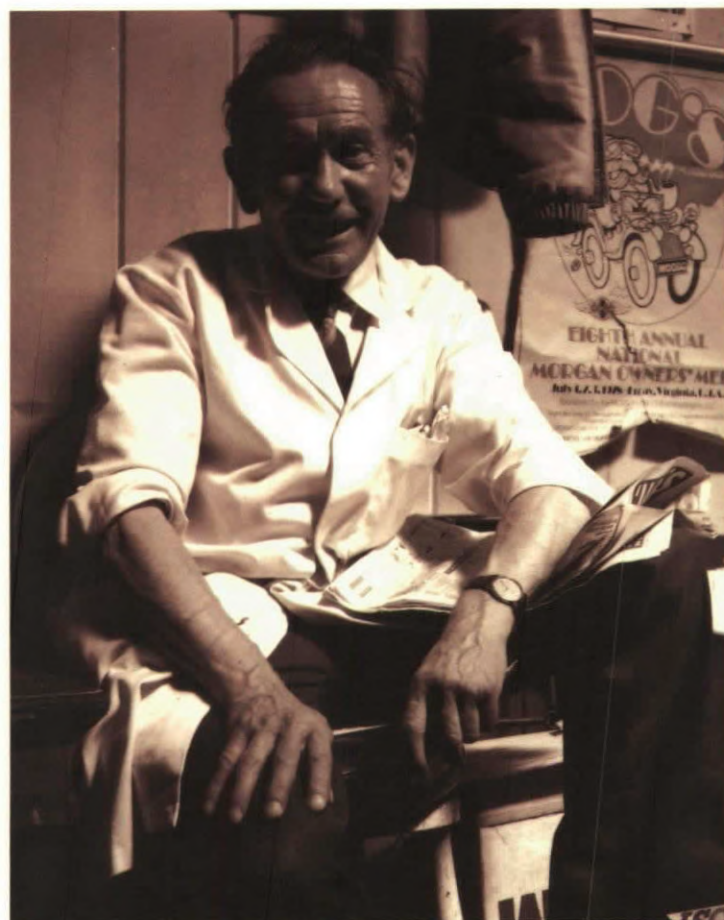
JAPAN  
Morgan Auto Takano Ltd  
9-25 2 Chome Tsumada-  
Minami, Atsugi Shi  
Kanagawa Ken 243

ALL SPECIFICATIONS AND INFORMATION  
IN THIS BROCHURE MAY BE CHANGED OR IMPROVED  
BY THE MORGAN MOTOR COMPANY  
WITHOUT PRIOR NOTICE.

Cantab Motors Ltd  
RRI Box 537A Round Hill  
Virginia 22141

Photographs courtesy of  
Neil Miller, Richard Tipping, Richard J Sowersby  
Lee Crump and Michael Bailie.  
Cover Illustration: Charles Morgan.





*MORGAN MOTOR COMPANY LIMITED*  
*MALVERN LINK • WORCESTERSHIRE • WR14 2LL • ENGLAND*  
*TELEPHONE: MALVERN (0684) 573104/5 • FACSIMILE: (0684) 892295*