



WHOLE VEHICLE TYPE APPROVAL



THE EUROPEAN FORD TAURUS



The ancestry of Henry Ford leads back to Europe. One could therefore assume that Ford automobiles are welcomed as familiar design. Reality is rather different. The first hundred years of automobile production have brought about closely similar- but not yet uniform regulations. European governments have issued some fifty different directives for the purpose of

vehicle type-approval. Automobile manufacturers must first demonstrate conformity with the European Union regulations for every new model. Subsequently they must guarantee conformity of production.



e4 71/245
suppression (radio)

e4 70/157
sound levels

e4 78/316
identification of controls

e4 78/548
heating systems

e4 74/483
exterior projections

e4 92/22
safety glass

e4 74/60
interior fittings

e4 75/443
speedometer
and reverse gear

e4 76/761
headlamps (including bulbs)

e4 78/317
defrost / demist

e4 76/756
lighting installations

e4 78/318
wash / wipe

e4 77/649
forward vision

e4 76/759
direction indicators



e4 78/549
wheel guards

e4 70/388
audible warning

e4 80/1269
engine power

e4 80/1268
fuel consumption

e4 76/114
plates (statutory)

e4 92/23
tyres

e4 92/226
anti spray devices



e4 70/311
steering effort

e4 77/541
seat belts

e4 70/222
rear registration plate space

e4 74/297
protective steering

e4 76/115
seat belt anchorages

e4 76/760
lamps (number plate)

e4 78/932
head restraints

e4 74/408
seat strength

e4 76/758
lamps (side, rear, stop)

e4 71/127
rear visibility

e4 77/539
lamps (reversing)

e4 76/757
reflex reflectors



e4 71/220
braking

e4 70/387
door latches / hinges

e4 89/297
lateral protection

e4 70/220
emissions

e4 92/21
masses / dimensions

e4 74/61
anti-theft

e4 70/221
fuel tanks
rear protective devices

e4 77/538
fog lamps (rear)

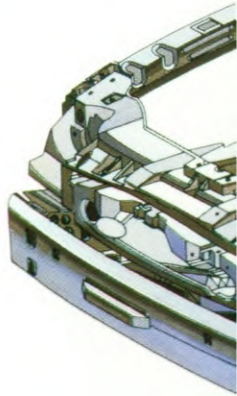


TYPE DEVELOPMENT

Hessing De Bilt serves as a consultant for type development long before production begins. Its expertise of the European regulations and experience in dealing with governmental agencies is unsurpassed.

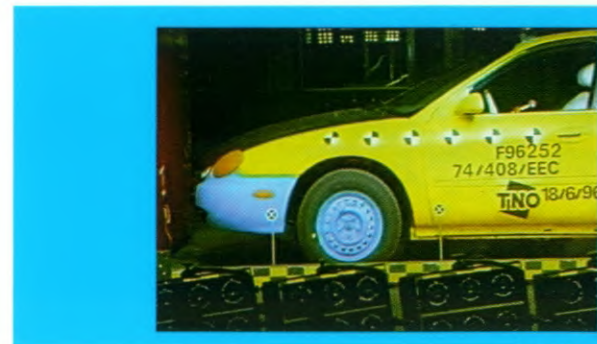
TYPE APPROVAL

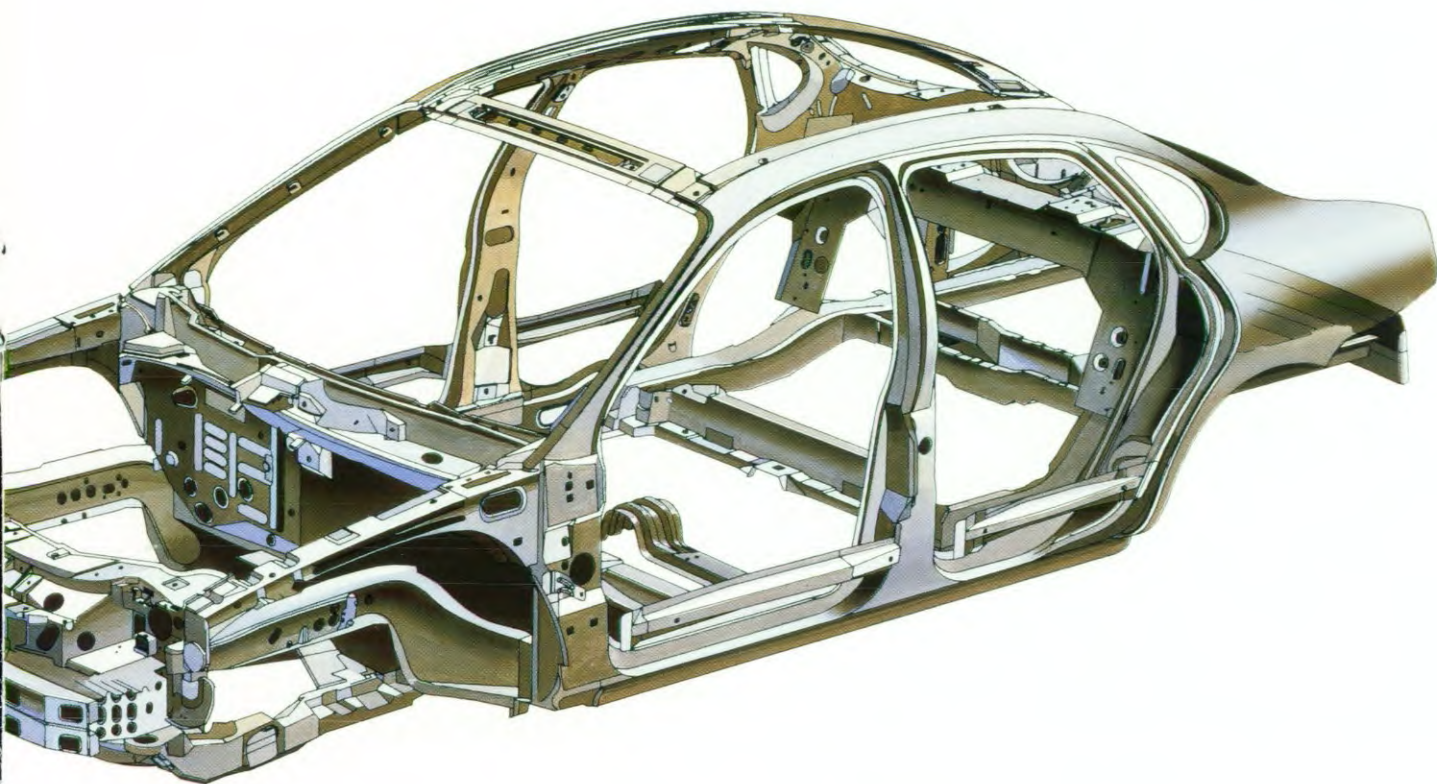
The same engineers who help develop a new model for European markets are also best equipped to guide it through the intricate process of type approval.



CUSTOM PARTS

Sometimes type approval is dependent upon the design and manufacture of custom-built parts. Hessing De Bilt acts as coordinator of outsourcing.





CONVERSION

The incorporation of regulation-driven changes in the original product are not always practical or even possible. In those instances Hessing De Bilt undertakes the necessary conversion work.



FLEXIBLE WORKFORCE

The Netherlands is the gateway to Europe in more respects than just geographically.

Hessing De Bilt unifies diverse specialist skills into one perfectly integrated and amazingly flexible workforce.



TNO Road Vehicles Research Institute is one of Europe's leading independent research and development organisations. The background of TNO is mainly scientific.



RDW

RDW Vehicle technology and information centre concentrates on vehicle testing and approval. Safety on public roads is the key standard as well as the history of RDW as a former governmental test institute.





KEMA *Energy, Environment & Quality* is an internationally renowned consultancy and engineering centre with strong roots in The Netherlands. KEMA is a specialist in test and approval procedures for electrical and electronic systems and components.

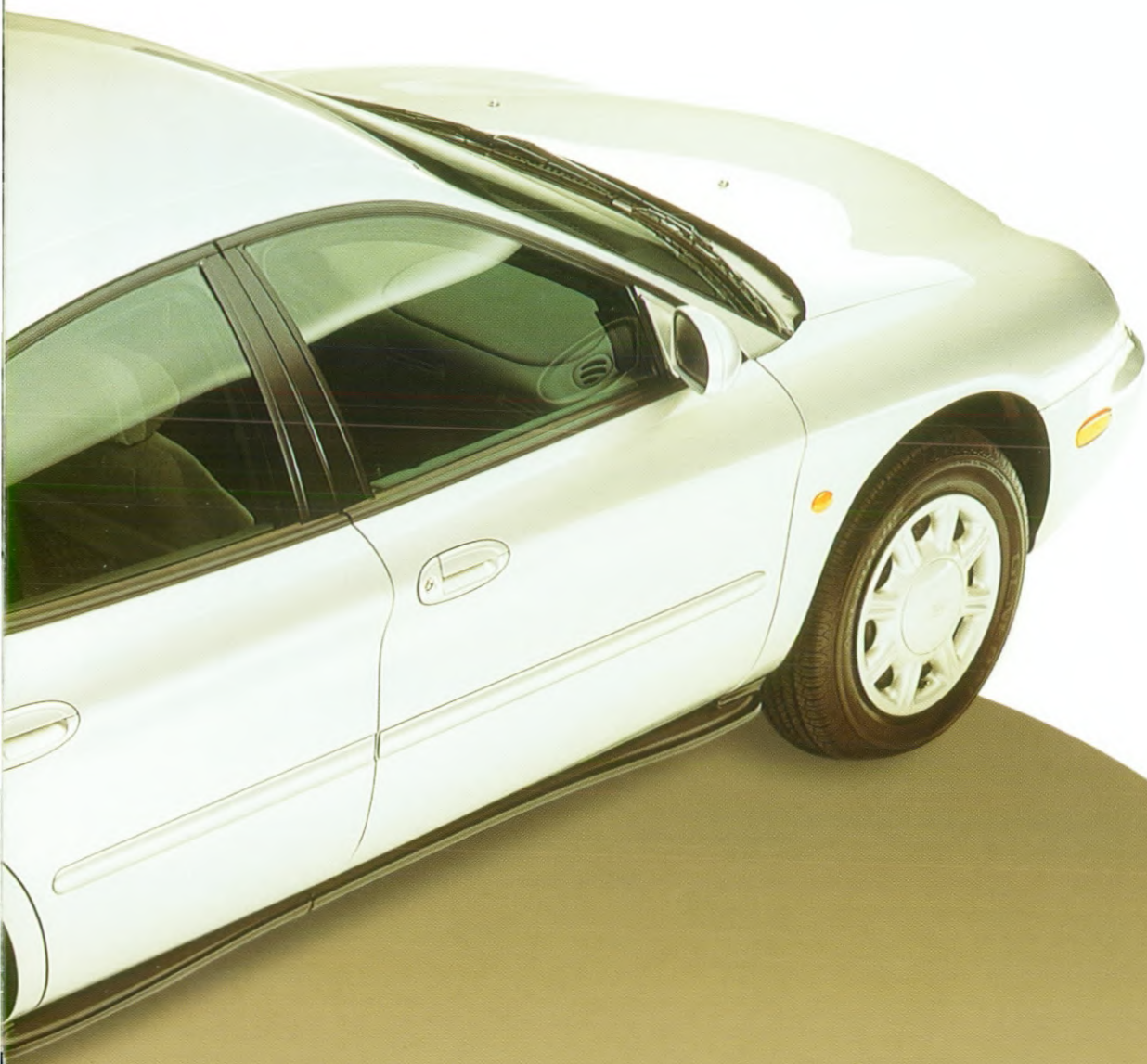
Hessing De Bilt is formally recognized by the European authorities as manufacturer. This position is needed in order to control conformity of production (COP). Under scrutiny of the ISO 9002 standard, Hessing De Bilt may issue certificates of conformity (COC) for the converted Ford Taurus all over Europe.



The European Ford Taurus is true to the original in every detail, even when it is unavoidable to alter the design. Take a look at the rear license plate holder for instance. It cleverly incorporates a fog lamp. Subtle but effective solutions are the hallmark of Hessing De Bilt.

SUBTLE BUT EFFECTIVE







HESSING

— D E B I L T —

Utrechtseweg 341, Postbus 45
NL 3730 AA De Bilt
The Netherlands
telephone +31 - 30 - 220 28 11
telefax +31 - 30 - 220 25 22

