

 **MERCURY SABLE**

'86







1986 Mercury Sable. Now the car you're ready for is ready for you.

The new Mercury Sable is a sophisticated shape that blends contemporary style and efficient performance in the manner of a great European road car.

Sable is a totally new car that, from inception, was designed to fulfill the needs of today's discriminating buyer—spaciousness, comfort and superior driving characteristics.

Sable arrives as a result of an investment of more than five years and nearly \$3 billion in development. The goal in that development was to design a contemporary four-door family sedan that could provide seating for up to six persons in an efficient, comfortable and responsive package.

The striking result of the development can be viewed by folding out this page.

The unique shape of the Mercury Sable immediately sets it ahead of its competition. Yet the Sable's sleek, slippery aerodynamic shape was fashioned with more than just its attractive appearance in mind. The efficient aerodynamic form of the new Mercury Sable

actually contributes to its quiet ride and precise handling.

The Mercury Sable is equipped with front-wheel drive to provide excellent traction in all weather and road conditions.

And Sable has a fully independent suspension to deliver a consistently smooth, comfortable ride, even over rough and inconsistent road surfaces.

Power-assisted rack-and-pinion steering endows the new Mercury Sable with precise driver control and quick response to driver commands.

Power-assisted brakes provide the Sable with impressive stopping power.

The Sable GS sedan is equipped with a 2.5-liter inline four-cylinder engine with central fuel injection that delivers efficient performance and frugal fuel consumption.*

On the top-of-the-line Sable LS and on Sable wagon models, an all-new 3.0-liter V-6 engine with multi-port electronic fuel injection supplies more responsive power.

The 3.0-liter V-6 engine uses an advanced four-speed automatic overdrive transaxle designed to make efficient use of that respon-

sive power while providing good fuel economy.**

And Sable was designed to provide a spacious and luxurious interior for both driver and passengers.

The Mercury Sable, in fact, has more interior space than any other car in its class.**

That the 1986 Sable, the new flagship of the Mercury car line, should provide all of these advanced features in such an attractive package should come as no surprise. Mercury cars—the Cougar, Topaz, Lynx, Capri, Marquis and Grand Marquis—are built on a cornerstone of quality and integrity.

Mercury cars, in fact, are among the highest quality American cars, based on a survey of owner-reported problems in the prior six months in a 1985 survey of 1981 through 1984 models designed and built in the U.S.

The new 1986 Mercury Sable. Its striking contemporary styling, responsive powerplants, spacious interior and confident ride make it the shape you'll want to be in.

Sable's aerodynamic efficiency creates a dynamic sculpture.



The shape of the new Mercury Sable is, in and of itself, a pure and beautiful form. But in the automotive world the ultimate beauty of a car is not judged by how it looks in a stationary pose; rather, it is based on how the car performs in motion, in a dynamic state.

To assure that the Mercury Sable would give its finest performance on the road, the engineers who designed it spent no less than 300 hours testing the Sable's shape in the wind tunnel. After hundreds of separate tests in the wind tunnel, Sable emerged with a drag coefficient of just 0.32 — one of the lowest ever for a four-door production sedan.

Sable's aerodynamic design contributes to the car's performance in several ways that translate to a quiet, stable and confident ride.

Sable has flush-mounted window glass all around — a first for American cars — to improve aerodynamics and help make it a quiet car.

The flush-mounted glass helps minimize both exterior and interior noise, so that whether you're intent on concentration, conversation or concert-hall sound from the radio, Sable provides a quiet, comfortable interior.

The overall shape of the Sable, with its flushed laser lightbar, steeply raked windshield set in at 60 degrees, backlite set in at 62 degrees and slightly raised rear deck, contributes to the overall handling and stability of the car.

By reducing lift and generating downforce, the shape of the Sable increases tire contact with the road surface, enhancing its ability to hug the road.

The aerodynamically efficient shape of Sable also helps reduce the effect of side winds, such as those that might occur when passing a large truck, by reducing yawing — side-to-side movement of the car.

Sable's shape also reduces wind resistance, so that the engine doesn't have to work as hard to achieve a given road speed. This means more efficient engine performance, reduced stress and better fuel economy*.

Additionally, Sable's lightbar is designed so that the air deflected up and over it carries dirt and water deposits so the surface remains clean, even in inclement weather.

The polycarbonate front bumper on Sable — efficient on its own because of its light weight — helps direct the airflow into the engine compartment for improved cooling properties.

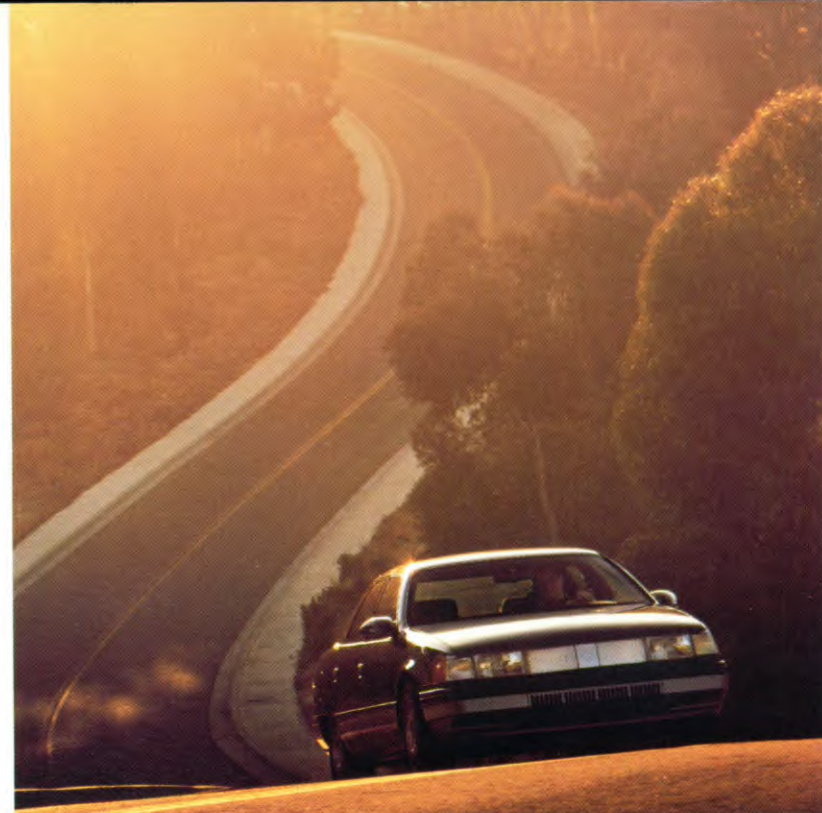
Sable's technologically advanced aerodynamic shape is designed to deliver a more enjoyable ride for its occupants. That Sable's functionally efficient shape also happens to be beautiful is only one more reason why the 1986 Sable might reshape your thinking about contemporary automobiles.

*See EPA statement on page 27.





Inside and out, Sable is designed to provide commanding driver control.



Both the dynamic operating systems and the ergonomically designed interior of the new Mercury Sable are purposefully designed to provide the driver with optimal control and comfort.

The fully independent suspension on the Sable—unique among mid-size American sedans—is a computer designed to deliver exceptional driver control over a wide variety of road surfaces while maintaining a smooth, controlled ride.

The front and rear suspensions employ nitrogen gas-filled MacPherson struts and shocks. This Nitra-cushion suspension creates a level of wheel control not possible with a conventional suspension.

The nitrogen-pressurized shocks

and struts help the suspension absorb large bumps or holes in the road while still delivering a smooth, controlled ride.

Additionally, Sable has power-assisted rack-and-pinion steering that offers solid road feel with no steering wheel play. With a 15.25:1 steering ratio, Sable delivers quick, predictable steering that makes the car feel secure and nimble.

Sable's front disc and rear drum brake system features power-assist to reduce the amount of pedal effort needed.

The tires on Sable—P205/70R14 as standard equipment—also are specially designed to assist road-hugging ability with excellent handling capability and positive steering response.

Sable's superb dynamic efficiency, however, is only part of the story. The inside of Sable also is

designed to provide the driver with maximum control.

Sable's driver's seat is designed to give a "command seating position," as shown at left in a Smoke Sable LS interior. This means the driver's seat is positioned so it provides excellent visibility—high enough in the vehicle to give a good view over the hood and to the sides and rear.

All instrumentation can be seen at a quick glance. All controls can be reached without the driver having to lift his or her back from the seat.

The engineers who designed the interior of the Sable did intensive research into ergonomics—the interaction of man and machine.

These studies resulted in a detailed analysis that helped shape the interior of the Sable.

Switches are designed with

contoured buttons with a raised bump for "on" and a depressed contour for "off" positions.

This touch-coded system provides a tactile communication with the controls, permitting the driver to keep his or her eyes focused firmly on the road.

The instrument panel lighting control switch is infinitely variable so it can be rotated to give just the desired amount of light intensity for quick interpretation. And nearly 100 percent of the instrument panel is illuminated and backlit for better visibility at night.

The dynamic and ergonomic efficiency of the new Mercury Sable is so outstanding that its interior complements its mechanical efficiency to provide a commanding sense of driver control.



In the Mercury Sable, comfort means control, not complacency.



The new Mercury Sable was designed with the notion that a comfortable driver is more completely in control.

To reinforce that notion, the front seats are specially designed to help the driver and front seat passenger remain comfortable, even over long distances.

The front seats are the result of more than three years and 100,000 miles of actual riding and driving experience.

Sable's front seatbacks have a special six-spring support system that provides back support above and beyond the normal cushioning. The "flex-o-lator" support system is not available on any other car in the United States, domestic or foreign.*

Additionally, Sable's seats have a full wide-bar release that provides adjustment along the seat track

with either hand. It even lets you adjust the front seats from outside the vehicle. Again, no other car sold in the U.S. — domestic or foreign — has this full-width bar.*

The recliner adjustment on the Sable driver's seat is graduated in $\frac{3}{4}$ of a degree, so the driver has many angles from which to select his or her driving position. This enables Sable to provide a great number of individual seating positions and accommodate a wide variety of physical builds and driving styles.

Sable's rear seats, capable of accommodating up to three persons, were designed with passenger comfort in mind as well.

Child-resistant rear-door locks are standard, and the rear passenger compartment in Sable even has its own heat ducts to help assure passenger comfort.

Of course, the little features in the Mercury Sable also are

designed for maximum comfort and efficiency.

The optional speed control, for example (shown at the top of this page), is located right on the steering wheel where it can be activated with a mere touch of your fingertips.

Sable provides a storage box built right into the rear window ledge in sedan models for a first aid kit or other travel necessities, as shown in the center photograph.

And Sable's door handles, shown above at the bottom, were designed for ergonomic efficiency. The handles can be conveniently opened even by persons with long fingernails or by a gloved hand.

The 1986 Mercury Sable. Its comfort and convenience are the result of logic tempered with human needs.

*Exclusive of other Ford Motor Company products.

Sable's technology
can be seen — and felt.

The 1986 Mercury Sable makes use of the latest advancements in several technologies to provide a controlled driving condition.

Both the 2.5-liter four-cylinder engine on the Sable GS and the 3.0-liter V-6 engine on the Sable LS, for instance, are constantly monitored by a microprocessor-controlled Electronic Engine Control system — EEC-IV.

EEC-IV monitors and controls engine operations precisely and instantly under any condition — including weather extremes and altitude variations — for optimum power output and fuel efficiency.*

The result of this electronic fine-tuning is improved engine performance, better gas mileage,* improved cold starting, driveability and idle speed control.

Sable also is the only car available anywhere with an optional heated windshield.** This Insta-Clear™ windshield melts frost within three minutes at temperatures of zero degrees Fahrenheit and above.

Conventional defrosters or demisters take 15 or more minutes to clear the windshield.

A transparent coating which conducts electricity covers the entire windshield surface, so defrosting visibility is dramatically

increased, both prior to and during vehicle operation.

Additionally, the Insta-Clear™ windshield blocks out 40% more of the sun's ultraviolet rays than conventional clear windshields.

Sable also can be ordered with an optional electronic instrument panel that displays digital readouts for the speedometer, odometer and trip odometer, as well as for several fuel computer and diagnostic functions.

Mercury Sable. Its technological touches are designed with people in mind.

*See EPA statement on page 27.

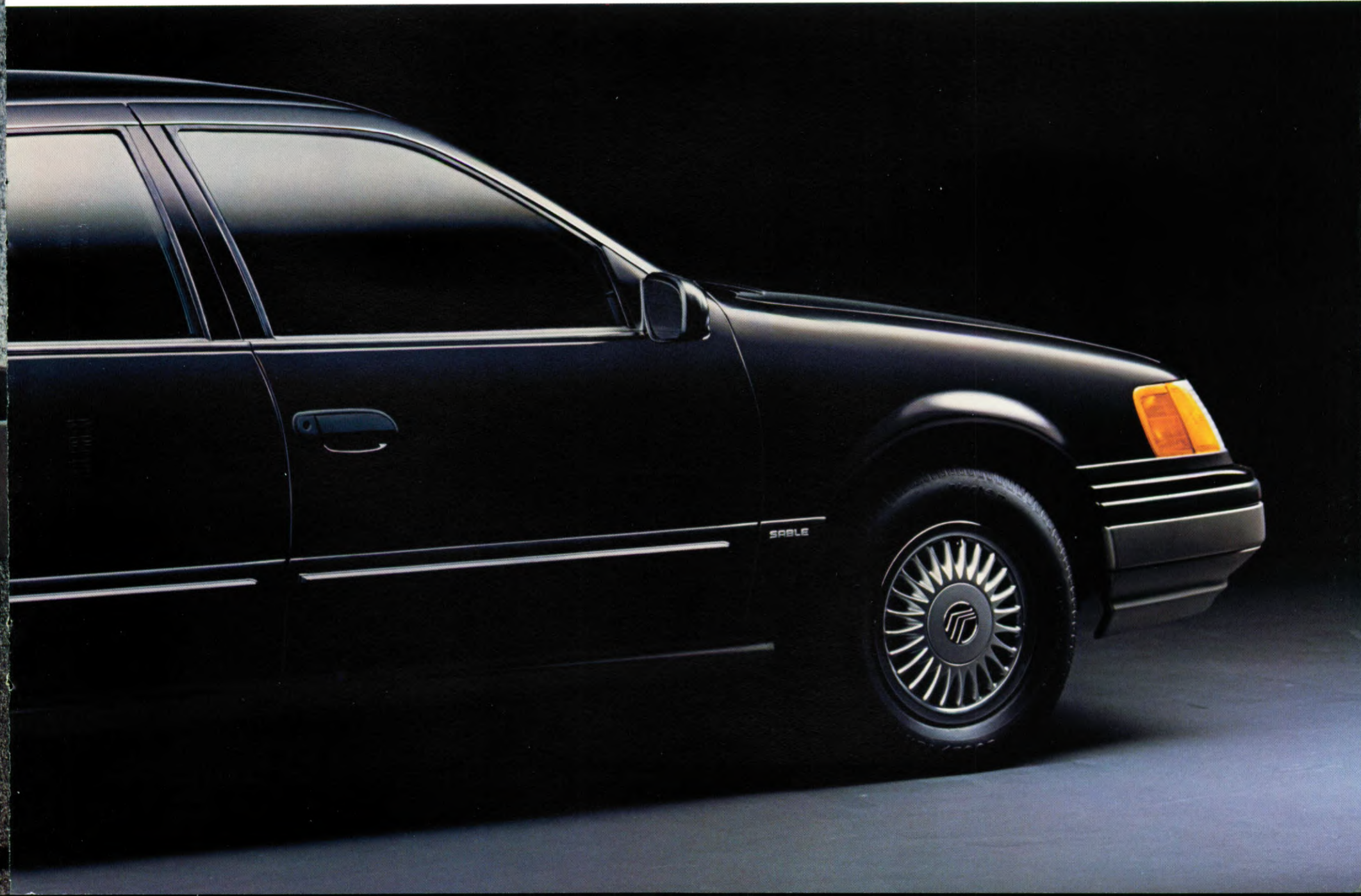
**Exclusive of other Ford Motor Company products.



Sable can be ordered with this optional electronic instrument panel that displays digital readouts of several vital functions.



Sable GS in Black. Some features shown may be optional. See option list on page 27.







A great road car that just happens to be a station wagon.

The 1986 Sable wagon may just be the perfect car for people who never dreamed they'd want a station wagon.

Like the Sable sedan, the Sable wagon was designed for maximum aerodynamic efficiency. With a drag coefficient of just 0.35 Sable wagon is, in fact, the most aerodynamically pure station wagon sold today.

As with the Sable sedan, the Sable wagon's aerodynamic efficiency translates to good stability and handling, a quiet, comfortable interior and good gas mileage.*

Handling and ride comfort also are enhanced by the fully independent suspension.

Because a station wagon is asked to perform tasks that a sedan isn't, and because space is at a premium in station wagons, the engineers who designed the Sable wagon devised an independent rear suspension specifically for the wagon model.

The independent rear suspension on the Sable wagon was

designed for maximum handling and space efficiency.

This suspension is totally different than the rear suspension on the Sable sedan. It uses an upper and lower arm arrangement with the spring and shock absorber attached to the lower arm. The spring is located inboard of the more conventional shock absorber.

Additionally, the Sable wagon is equipped with a rear stabilizer bar to further improve handling characteristics.

Because of the location of the strut towers on Sable wagon's rear suspension, there is minimum intrusion on the cargo area.

And cargo area is something there's plenty of in the Sable wagon. With the rear seatbacks folded down, Sable wagon can hold 81 cubic feet of luggage, groceries or sports equipment.**

Or, with the rear seatbacks up, Sable wagon can still carry up to six passengers and more than 45 cubic feet of cargo.**

And the Sable wagon can be ordered with an optional rear-facing

third seat to increase its passenger-carrying capacity to eight.

With so many functional space features, Sable wagon is designed to provide the adaptable space needed for today's active lifestyles.

Of course, space isn't the only feature at which the Sable wagon excels. It is powered by the same responsive 3.0-liter V-6 engine with multi-port fuel injection and economical four-speed automatic overdrive transmission as the Sable sedan.

Sable wagon, like the sedan, gets power-assisted rack-and-pinion steering for precise response to driver commands. And power-assisted front disc, rear drum brakes to minimize the pedal effort needed in braking applications.

Sable wagon. Its style, space and sedan-like ride clearly make it a superior car. Even for people who never thought they would like a station wagon.

*See EPA statement on page 27.

**Based on 1986 MVMA Passenger Car Specifications.



Sable wagon has something to say about your station in life.

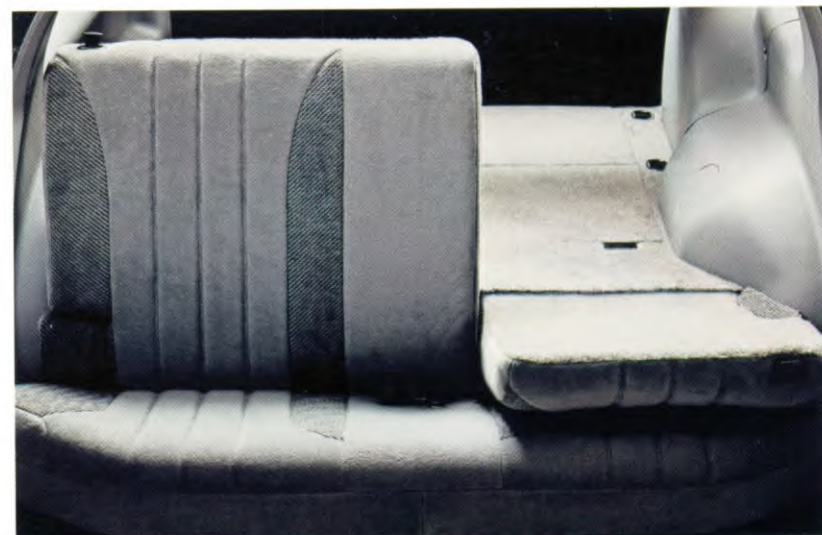
That something is that you appreciate the efficient appearance and responsive handling of a European-style road car that has all of the adaptability and utility of a traditional wagon.

Witness the ample dimensions of the Sable wagon's rear cargo compartment at left in a Smoke LS model.

The cargo area is fully trimmed and covered with soft, load-cushioning carpeting. It's an inviting environment.

The rear pillars have lights with on/off switches built right into them, and the rear speakers in the Sable wagon are mounted directly in the rear roof pillars for improved sound quality.

Sable's 60/40 rear seat, shown at upper right, allows you to seat two people in the rear seat and still



carry long or bulky items.

The flip-up tailgate window on the Sable wagon can be opened two ways. Lift only the glass area, and you can reach in for light packages. Lift up the entire tailgate, and you have easy access to the cargo area for extra heavy or awkward items. The wagon's rear opening was designed to be at the right height for loading and unloading.

If a tailgate picnic is the order of the day, the tailgate acts like a canopy overhead. And the Sable wagon can be ordered with an optional rear-window wiper and washer for improved visibility.

The Sable wagon also comes standard equipped with floor-mounted luggage tie-down hooks to help keep things in place. Additionally, the top-of-the-line Sable LS wagon model is equipped with a cargo tie-down net to help

secure loose objects in the rear cargo area.

There's also a lockable storage area in the cargo compartment of the Sable wagon, so valuables can be stored out of sight and securely locked away.

The Sable wagon also offers some fun options, like the fold-out picnic table/tray shown below. The picnic tray is permanently stored in the wagon, and when you're ready to use it, just flip it over and fold it out. Complete with cup holders, the table/tray makes a perfect place setting for tailgate parties or an impromptu picnic.

Of course, with the sedan-like ride in the Sable wagon, you may not even realize you're driving a station wagon — until you need it.

The Sable wagon's cargo area, shown at left in a Smoke LS interior, is equally at home with an elegant picnic or routine household chores. The 60/40 split rear seat in the Sable wagon, shown above right, adds adaptable space. Sable's more pleasurable options include a built-in picnic table/tray, shown at right.







Like the Sable sedan, the Sable wagon is available in two models: the GS, shown at left in Sandalwood Clearcoat Metallic, and the LS model.

Both models feature the same sedan-like driving qualities, the responsive 3.0-liter V-6 engine with advanced multi-port electronic fuel injection and microprocessor Electronic Engine Control system.

To the already well-appointed GS model, the upscale Sable LS wagon adds more luxurious interior refinements like front seat power lumbar supports, four-way adjustable headrests, front seatback map pockets and more luxurious seat trim with individual center armrests and dual manual recliners.

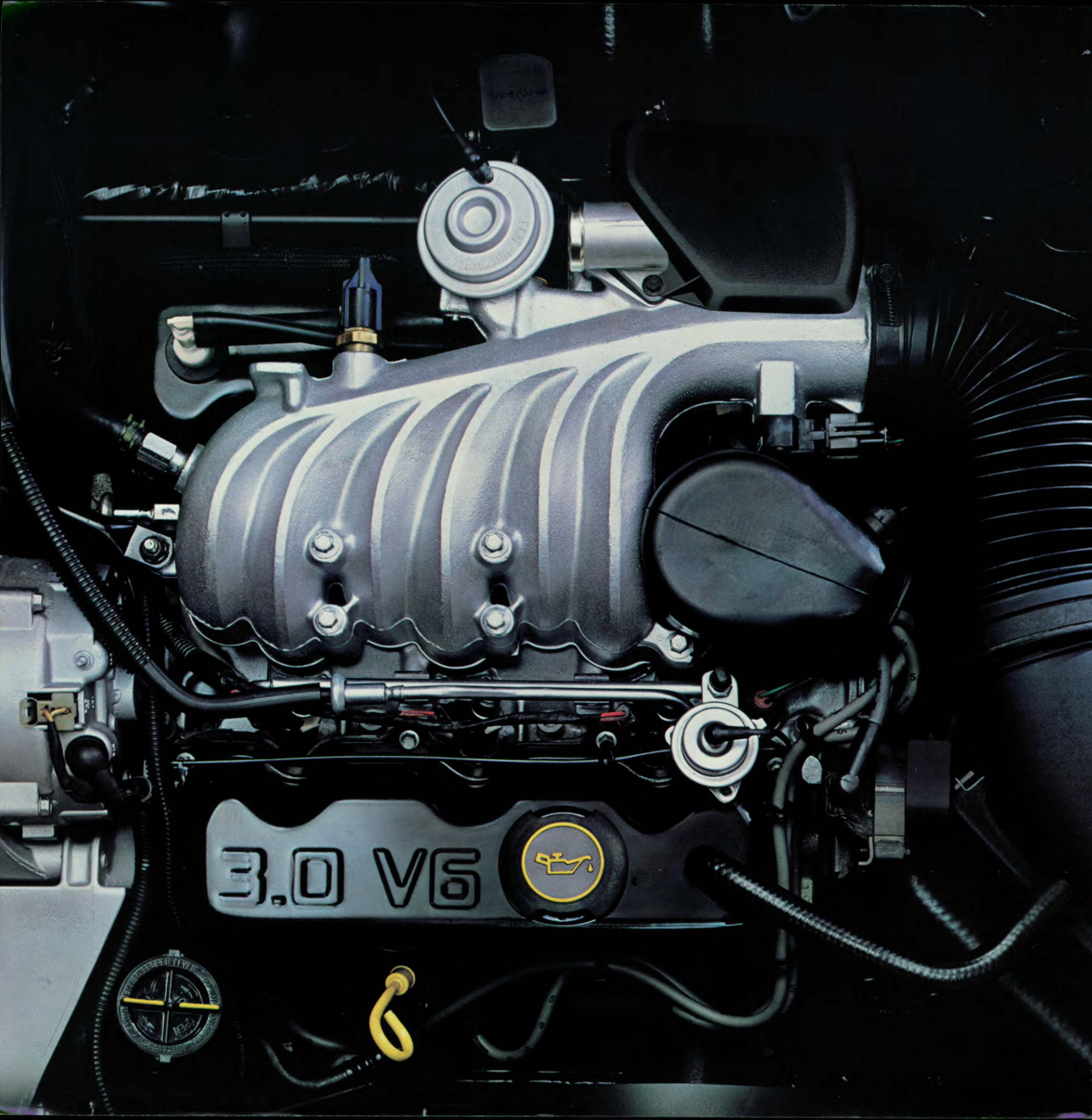
On the outside, both the GS and the LS wagons get dual power mirrors in body color with black trim. In addition, the LS wagon gets bodyside cladding with black on the upper portion and a color-coordinated lower section.

The LS model also gets some added functional features, like an electronic digital clock, power windows, interval windshield wipers, remote fuel-filler door release, an automatic parking brake release and warning lights for washer fluid, lamp outage, low fuel, low oil and door ajar.

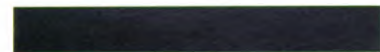
Of course, both the GS and LS models can be embellished with a long list of functional and convenience options, like speed control, six-way power seat adjustments for the driver's side – or six-way power seat adjustments for both driver and front passenger seats – tilt steering wheel or an improved AM/FM stereo cassette sound system.

Whether you opt for the Sable GS wagon or the top-of-the-line LS wagon, as they come standard equipped or personalized with your own favorite options, you can be sure that one thing comes standard: Mercury quality.

Sable GS in Sandalwood Clearcoat Metallic. Some features shown may be optional. See option list on page 27.



In the Mercury Sable, beauty extends well beneath the exterior.



The powerplants Sable is equipped with – an economical 2.5-liter four-cylinder engine is standard on the GS sedan, while LS and wagon models are standard equipped with a 3.0-liter V-6 engine – furnish a perfect case in point.

In developing the 3.0-liter V-6 powerplant, the engineers who designed it adopted a “clean sheet of paper” approach. This gave them the freedom to explore many different alternatives, test the various possibilities and then select the design that best met their objectives.

The result is an all-new 3.0-liter V-6 engine, shown at left, that provides an optimal mix of fuel economy* and power response. To help accomplish these dual objectives, the Sable V-6 engine employs state-of-the-art engine technology.

For instance, the multi-port electronic fuel-injection system on this powerplant helps deliver the precise amount of fuel needed to the combustion chambers to enhance the car's driveability, performance and fuel economy.*

The combustion chambers them-

selves were designed with free-breathing, fast-burn characteristics so fuel isn't wasted and so a high specific output is achieved.

Additionally, a remote air cleaner/induction system is used to effectively manage airflow; center-located spark plugs help deliver fast burn, and an aluminum intake manifold is used for its good cooling properties and reduced weight.

And for reduced friction, the 3.0-liter V-6 engine uses 5W30 – instead of 10W30 – motor oil.

Sable's front-wheel-drive configuration allows the engine to be mounted transversely, from side to side or east to west, resulting in a cleaner, more simplified layout in the engine compartment and more room in the passenger compartment.

The relative absence of hose routing and harness wiring gives it a neat, organized appearance. In fact, the Sable with the V-6 engine has only eight feet of rubber and plastic hoses, far less than most contemporary cars.

And servicing the Sable's V-6 engine also has been simplified. Service points like the engine oil dipstick, the engine oil filler cap and the windshield washer fluid

filler cap are highlighted in yellow for quick visibility.

Another impressive feature of the Sable 3.0-liter V-6 engine is its advanced microprocessor on-board computer, the second-generation Electronic Engine Control IV, EEC-IV.

The 1986 Mercury Sable with the V-6 engine has a software feature that enables the EEC-IV system to continuously fine tune each engine by learning its specific operating requirements. This adaptive software feature permits the on-board computer to run the engine for optimal customer satisfaction under all operating conditions, resulting in enhanced fuel economy* and driveability.

Sensors throughout Sable relay information to EEC-IV's control system on various engine conditions, such as spark knock, manifold pressure, air intake temperature, as well as many other functions.

The electronic control assembly receives these inputs, evaluates whether or not a change should be made and, if a change is called for, makes it through system outputs or actuators.

The ultimate effect of these adjustments is that EEC-IV enhances fuel economy,* cold-start driveaway,

engine performance, idle speed control, vehicle cruise control and smooth operation at all altitudes.

EEC-IV also has a self-test software feature that continuously monitors the system's performance. If an irregularity is ever detected in the EEC-IV control system, it will be remembered in its “keep alive memory,” and EEC-IV will tell the technician about the irregularity the next time your car is taken in for servicing.

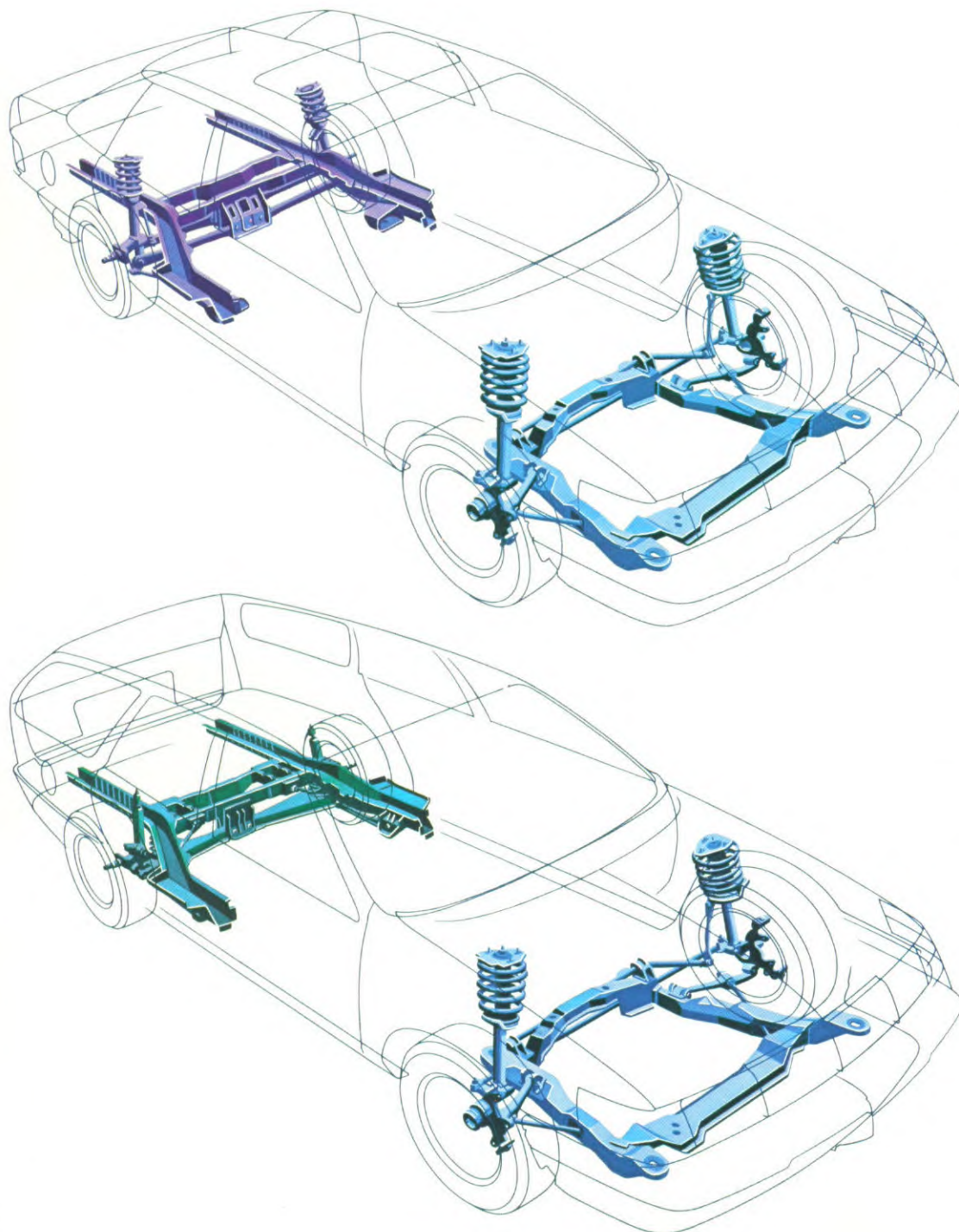
The four-speed automatic overdrive transmission that is coupled to Sable's V-6 engine also is of advanced design.

It includes an electronically controlled torque converter lockup in third and fourth gears for reduced engine noise and improved performance and fuel economy.* Additionally, its overdrive fourth gear, with a 0.69:1 ratio, further adds to fuel efficiency.*

All of this advanced componentry – the V-6 engine, multi-port electronic fuel injection, EEC-IV, the four-speed overdrive automatic transmission – help explain why the 1986 Mercury Sable is as beautiful to drive as it is to look at.

*See EPA statement on page 27.

Sable's engineering
efficiency delivers
driver proficiency.



The 1986 Mercury Sable is engineered to deliver a smooth, comfortable, controlled ride with good handling.

To a large degree, it is Sable's sophisticated suspension system that enables the car to deliver this luxurious, controlled ride.

The fully independent suspension system on both the Sable sedan and wagon were designed with the aid of computers. Computer-Aided Design (CAD) allows more accurate and precise designs. In fact, design data for the Mercury Sable is so precise, it consists of computer-stored mathematical data calculated to one one-thousandth of a millimeter.

The front and rear suspensions on both the Sable sedan and wagon employ nitrogen gas-pressurized MacPherson struts and shock absorbers to help keep all four wheels on the ground, even during harsh driving conditions.

Nitrogen-pressurized struts and shocks promote quick dampening response to bumps and holes in the road, resulting in a smoother, plush ride with better control on rough roads than a conventional suspension could deliver.

Additionally, the front suspension uses a forged lower control arm, a new high-efficiency front stabilizer bar and a double-isolated tension strut. The front suspension is mounted to the front subframe for further isolation of bumps from the driver and passengers.

Sable's front suspension also was designed to minimize strut friction with Teflon-coated rod and piston bearing surfaces and a low-friction garter spring rod seal. These features result in smooth response to small road inputs, reducing harshness on tar strips and irregular concrete.

Front suspension components also are specially treated to help maintain the quality engineered and built in to the Sable. The springs are coated with epoxy to prevent rust; fasteners are specially coated to help prevent squeaks and rattles as the car ages; and the shock/strut pivot bearings are sealed in plastic so the suspension requires no lubrication for its lifetime.

The rear suspension on the Sable sedan employs galvanized parallel lower control arms with full nitrogen-pressurized MacPherson struts. On the LS model the rear suspension includes a high-efficiency stabilizer bar mounted to the shock/strut for improved handling. Like the front suspension, the rear suspension uses epoxy-coated springs and specially coated fasteners to resist corrosion.

The independent rear suspension on the Sable wagon is entirely different from that of the sedan because its design objectives were different. In the wagon, the objective was to retain a sedan-like ride quality while providing for the versatile functions a wagon is asked to perform.

Additionally, the rear suspension design of the Sable wagon was chosen to maximize the rear floor space available for cargo.

The Sable wagon rear suspension uses an upper and lower arm arrangement with the spring and shock absorber attached to the lower arm. The springs are located inboard of the nitrogen-pressurized twin-tube shock absorbers. Also, the stabilizer bar-to-arm brackets are revised to a single bolt attachment for greater reliability.

Working in conjunction with the Sable's advanced suspension systems are the power-assisted steering and braking systems.

The Sable has rack-and-pinion steering with a 15.25:1 ratio to deliver a solid road feel with little steering wheel play. And Sable's quick predictable steering helps deliver a stable yet nimble feel of the car.

Sable's power-assisted ventilated front disc brakes are designed to provide effective cooling to help reduce brake fade after repeated hard stops. It also offers fast recovery if the brakes get wet.

Additionally, Sable's braking system helps the driver avoid wheel lockup to reduce the possibility of skidding by use of a brake proportioning valve which, in effect, senses the vehicle's load.

A standard diagonal-split braking system provides both front and rear brakes capabilities for controlled stops in the event of some irregularity in the system.

In addition to its smooth ride and controlled handling, the Mercury Sable also is designed with your safety in mind.

The 1986 Mercury Sable meets or exceeds all applicable federal regulations regarding vehicle safety.

As a part of this, all Mercury Sables are equipped with seat belts—integral lap and shoulder belts with automatic retractors and tension relievers for the driver and outboard front seat passenger and lap belts for other passengers.

Seat-belt use is now required by law in many states and has been proven to help save lives and reduce injuries.

Occupant protection, however, is not limited to adults. Several recent studies have shown that proper use of child-protection restraint systems also helps prevent injuries and save young lives. Almost every state now requires the use of protective child restraints.

Ford Motor Company's Tot-Guard Safety Seat and its Infant Carrier meet or exceed all applicable federal standards. Both are easy to install and use the seat belts already in the Sable. Ford Motor Company and the Lincoln-Mercury Division strongly urge the use of both child restraints and seat belts, whether you're driving around the block or around the country.

Customer satisfaction is also a top priority at Lincoln-Mercury. One of the key ways Mercury cars deliver customer satisfaction is through the products' quality.

Mercury cars, in fact, are among

the best-built American cars, according to an average of owner-reported problems in the prior six months in a 1985 survey of '81-'84 models designed and built in the United States.

Customer satisfaction with Mercury cars also may be attributed to the personalized attention given by the sales and service staffs at Lincoln-Mercury dealerships and to the firm commitment we've made to integrity.

To demonstrate the sincerity of this commitment, a new program called the Lincoln-Mercury Quality Commitment has been implemented.

The goal of the Lincoln-Mercury Quality Commitment is to achieve outright industry leadership in customer satisfaction. We want Lincoln-Mercury customers to be the most pleased in the entire automotive industry.

An integral part of the Lincoln-Mercury Quality Commitment is the extensive limited warranty that is given with every Mercury car. Ask your Lincoln-Mercury dealer for a copy of the warranty and take time to read it.

Additionally, through a direct mail program that corresponds directly with Mercury owners, we ask our customers to voice their opinions on our quality and their delivery satisfaction. In this way we are better able to provide the customer satisfaction that has made Lincoln-Mercury a leader in its field.

Sable Specifications

Exterior dimensions (in inches)

		Sedan	Wagon
Wheelbase:		106.0	106.0
Tread	front:	61.5	61.5
	rear:	60.5	59.9
Length:		190.9	191.9
Width:		70.7	70.7
Height:		54.4	55.2

Interior accommodations (in inches)

Head room	front:	38.3	38.6
	rear:	37.6	38.3
Leg room	front:	41.7	41.7
	rear:	37.1	36.6
Shoulder room	front:	57.5	57.5
	rear:	57.5	57.5
Hip room	front:	54.9	54.9
	rear:	55.6	56.4
Turning diameter (ft):*		38.5	38.5
Cargo volume (cu ft):		18.5	81.0**
Fuel capacity (gal):		16.0	16.0
Curb weight (lb):		2932	3210

*Curb-to-curb.

**With rear seatbacks down;

45.7 cu ft with rear seatbacks up.

Standard Features

Sable GS Sedan

selected standard functional features

2.5-liter transverse-mounted inline four-cylinder engine with electronic fuel injection
Electronic Engine Control system
Three-speed automatic transaxle
Front-wheel drive
MacPherson strut front suspension with nitrogen gas-pressurized struts
Front stabilizer bar
Independent rear suspension with four-bar parallel arm design and nitrogen gas-pressurized struts
Power-assisted ventilated front disc/rear drum brakes with brake wear sensors

Power-assisted rack-and-pinion steering
P205/70R14 black sidewall tires with 14-inch Deluxe wheel covers
Mechanical instrument cluster including tachometer, temperature gauge and trip odometer
Electronic AM/FM stereo radio with four speakers
Three-year corrosion protection
5-mph impact bumpers
Urethane coating on lower door and rocker panel
Heat ducts to rear seats

Child-resistant rear door locks
Single key ignition/entry
Electronic warning chimes
Hood assist gas cylinders
Interior hood release
Extra-quiet sound package
Dual note horn
Rear-door courtesy light switches
Manual parking brake release
80-ounce windshield washer reservoir
Six-passenger seating
18.5-cubic foot trunk capacity

selected standard exterior features

Aerodynamically styled body
Recessed windshield wipers
Polycarbonate laser lightbar grille
Aerodynamically styled halogen headlamps
Glass-edge type black windshield molding with bright accent
Body-color polycarbonate upper bumper

Black bumper rub strips
Polycarbonate lower bumper in coordinated color
Wraparound front side markers
Color-coordinated rocker panel
Deluxe wheel covers
Front cornering lamps
Dual power mirrors in body color with black trim

Wraparound rear-glass design
Wraparound rear side marker light
Laser-design taillamps
High-mount rear stoplamp
Dual decklid paint stripes
Glass-edge type black backlite molding with bright accent

selected standard interior features

Driver-oriented swept-away mechanical instrument panel
Mechanical instrument cluster
Four-spoke steering wheel with center horn blow control
Side-window defoggers
Locking glove box
Back-lit instrumentation
Touch-coded switches

Cloth flight bench front seat with driver's side manual recliner
Two-way adjustable front headrests
Map pockets on front door trim
Three passenger grab handles
Visor vanity mirrors (covered on driver's side)
Document strap on driver's sun visor
Rear-seat center fold-down armrest

Covered package tray/storage bin
Four-way adjustable rear headrests
16-ounce carpeting
Color-keyed, cloth-covered molded fiberglass headliner
Fully trimmed luggage compartment
Lighted luggage compartment

Sable LS Sedan

includes all standard Sable GS sedan features plus the following additions/changes:

3.0-liter transverse-mounted V-6 engine with multi-port electronic fuel injection
Four-speed automatic overdrive transaxle
Rear stabilizer bar
Electronic digital clock
Warning lights for washer fluid, lamp outage, low fuel, low oil and door ajar
Power windows

Light group
Automatic parking brake release
Remote fuel-filler door release
Remote decklid release
Interval windshield wipers
Bodyside cladding with black upper shelf and color-coordinated lower section
Dual flip-up illuminated visor vanity mirrors

Upgraded trim with 50/50 cloth twin comfort front seats with individual center armrests and dual manual recliners
Front seat power lumbar supports
Four-way front headrests
Front seatback map pockets
Upgraded door trim panels

Sable GS Wagon

includes all standard Sable GS sedan features plus the following additions/changes:

3.0-liter transverse-mounted V-6 engine with multi-port electronic fuel injection
Four-speed automatic overdrive transaxle
Independent short and long arm rear suspension with variable rate springs and lower shock towers to maximize cargo area

Rear stabilizer bar
P205/70R14 black sidewall tires with 14-inch Deluxe wheel covers
Flip-up tailgate window
Roof-mounted stereo speakers on rear pillars
Cargo lights with on/off switches mounted on rear pillars

Load floor tie-down hooks
Black side-window moldings with bright accents on doors at beltline
Body-color rear pillars
Stand-alone rear side marker light
Aerodynamically styled roof-mounted luggage rack (may be deleted for credit)
60/40 split folding rear seat

Sable LS Wagon

includes all standard Sable GS wagon features plus the following additions/changes:

Electronic digital clock
Warning lights for windshield washer fluid, lamp outage, low fuel, low oil and door ajar
Power windows
Light group
Automatic parking brake release
Remote fuel-filler door release

Interval windshield wipers
Bodyside cladding with black upper shelf and color-coordinated lower section
Upgraded trim with 50/50 cloth twin comfort front seats with individual center armrests and dual manual recliners
Front seat power lumbar supports

Four-way front headrests
Front seatback map pockets
Upgraded door trim panels
Dual flip-up illuminated visor vanity mirrors
Cargo tie-down net

Sable Colors

Standard Exterior Colors

Black
Oxford White
Sand Beige
Taupe*

Optional Clearcoat Colors

Silver
Clearcoat Metallic
Smoke
Clearcoat Metallic
Medium Canyon Red
Clearcoat Metallic
Light Regatta Blue
Clearcoat Metallic
Medium Regatta Blue
Clearcoat Metallic
Sandalwood
Clearcoat Metallic
Medium Aegean
Clearcoat Metallic
Driftwood
Clearcoat Metallic
Medium Taupe
Clearcoat Metallic*

Standard Interior Colors

Smoke
Midnight Blue
Canyon Red
Sand Beige
Taupe*

*Not available on Sable wagon models.

Sable Options

GS Sedan LS Sedan GS Wagon LS Wagon

	Air conditioning, manual control	OPT	OPT	OPT	OPT
	Air conditioning, electronic				
	Automatic Climate Control	OPT	OPT	OPT	OPT
	Automatic lamp on/off	OPT	OPT	OPT	OPT
	Automatic parking brake release	OPT	STD	OPT	STD
	Battery, heavy-duty	OPT	OPT	OPT	OPT
	Bodyside paint stripes	OPT	OPT	OPT	OPT
	Digital day/date/clock	OPT	STD	OPT	STD
	Dual illuminated visor vanity mirrors	OPT	STD	OPT	STD
	Electronic instrument cluster with Tripminder*	OPT	OPT	OPT	OPT
	Extended range fuel tank	OPT	OPT	OPT	OPT
	Floor mats, front and rear	OPT	OPT	OPT	OPT
	Heated windshield	OPT	OPT	OPT	OPT
	Heated backlite	OPT	OPT	OPT	OPT
	Individual bucket seats	OPT	OPT	OPT	N/A
	Intermittent wipers	OPT	STD	OPT	STD
	Keyless entry system	OPT	OPT	OPT	OPT
	Leather-wrapped steering wheel	OPT	OPT	OPT	OPT
	Manual passenger recliner	OPT	STD	OPT	STD
	Picnic table/tray	N/A	N/A	OPT	OPT
	Rear-window washer/wiper	N/A	N/A	OPT	OPT
	Speed control	OPT	OPT	OPT	OPT
	Tilt steering wheel	OPT	OPT	OPT	OPT
	Tinted glass	OPT	OPT	OPT	OPT
	Twin comfort seats	OPT	STD	OPT	STD
	Third rear-facing seat	N/A	N/A	OPT	OPT
	Vent windows	OPT	OPT	OPT	OPT
Power	Power seat, six-way driver	OPT	OPT	OPT	OPT
	Power seat, dual six-way	OPT	OPT	OPT	OPT
	Power antenna	OPT	OPT	OPT	OPT
	Power windows	OPT	STD	OPT	STD
	Power moonroof	OPT	OPT	OPT	OPT
Radios	AM/FM electronic stereo radio with cassette	OPT	OPT	OPT	OPT
	Premium Sound	OPT	OPT	OPT	OPT
Tires and Wheels	P205/70R14 WSW	OPT	OPT	OPT	OPT
	P205/65R15 BSW	OPT	OPT	OPT	OPT
	P205/65R15 WSW	OPT	OPT	OPT	OPT
	14-inch Polycast wheels	OPT	OPT	OPT	OPT
	15-inch cast-aluminum wheels	OPT	OPT	OPT	OPT
	15-inch Deluxe wheel covers	OPT	OPT	OPT	OPT
	Conventional spare tire	OPT	OPT	OPT	OPT
	WSW - white sidewalls BSW - black sidewalls				
Optional Packages	Light group	OPT	STD	OPT	STD
	includes dual beam dome lamp (except with moonroof), engine compartment light, headlamp-on chime, instrument panel courtesy lamp				
	Power lock group	OPT	OPT	OPT	OPT
	includes power door locks, remote decklid release (sedan only) and remote fuel-filler door release				

Selection of certain options may result in the deletion of certain standard equipment or the addition or deletion of certain options. Please consult your Lincoln-Mercury dealer for complete details.

Quality Replacement Parts Motorcraft

Genuine Ford and Motorcraft original equipment replacement parts are precision engineered and manufactured to Ford's high specifications, delivering top-level performance in all Lincoln and Mercury cars. The Ford and Motorcraft brand names are your best assurance of quality and long-term satisfaction because these replacement parts meet the same high standards as those installed in production, and at Mercury. "Quality is Job 1."

Ford Extended Service Plan



The optional Ford Extended Service Plan covers certain selected components on new Mercury cars for longer than the vehicle's basic warranty. The cost is so moderate for the protection offered that it could pay for itself the first time it is needed. Ask your Lincoln-Mercury dealer for complete details of the plan, which is available on cars sold and normally operated in the 50 United States and Canada.

Lifetime Service Guarantee



Participating Lincoln-Mercury dealers are now offering the Lifetime Service Guarantee, which guarantees their work on your Mercury Sable for as long as you own it. This means that you pay for a covered repair once and never again. If it ever has to be fixed again, the repairing dealer will fix it free. Free parts. Free labor. Even if the car is kept for your lifetime. It doesn't matter where the car was purchased or whether it's new or used, as long as you own the car the work is still covered by the repairing dealer. This limited warranty covers vehicles in normal use. Items not covered are routine maintenance parts, belts, hoses, sheet metal and upholstery. Ask your Lincoln-Mercury dealer for a copy of the warranty and take time to read it.

Ford-paid repair programs after the warranty period

Sometimes Ford Motor Company offers adjustment programs to pay all or part of the cost of certain repairs. These programs are intended to assist owners and are in addition to the warranty or to required recalls.

Ask Ford Motor Company or your Lincoln-Mercury

dealer about such programs relating to your Mercury Sable. To get copies of any adjustment program for your Mercury Sable or the vehicle of interest to you: Call Ford toll-free at 1-800-241-3673.

In Alaska or Hawaii, call 1-800-243-3711.

In Georgia, call 1-800-282-0959 or write Ford at: Ford Customer Information System, Post Office Box 95427, Atlanta, GA 30347. Please include your name and address, year, make, model and vehicle identification number, as well as engine size.

Technical Service Bulletins

All vehicles need repairs during their lifetime. Sometimes Ford issues Technical Service Bulletins (TSBs) and easy-to-read explanations describing unusual engine or transmission conditions which may lead to costly repairs, the recommended repairs and new repair procedures. Often a repair now can prevent a more serious repair later. Ask Ford Motor Company or your Lincoln-Mercury dealer for any such TSBs and explanations relating to your Mercury Sable.

To get copies of these Technical Service Bulletins and explanations for your Sable or the vehicle of interest to you: Call Ford toll-free at 1-800-241-3673.

In Alaska or Hawaii, call 1-800-243-3711.

In Georgia, call 1-800-282-0959 or write Ford at: Ford Customer Information System, Post Office Box 95427, Atlanta, GA 30347. Please include your name and address, year, make, model and vehicle identification number, as well as engine size.

EPA statement

1986 EPA mileage estimates were unavailable when this publication was printed. The 1986 Mercury Sable, however, should post excellent mileage figures. Ask your Lincoln-Mercury dealer for the latest information.

Buckle up—together we can save lives.

Buy or lease your Sable from your Lincoln-Mercury dealer.

Specifications and descriptions used were in effect when this publication was approved for printing.


Lincoln-Mercury Division reserves the right to discontinue options at any time or change specifications, equipment or designs without notice and without incurring obligation. Standard and optional equipment listed is subject to change. Some features described are optional at extra cost. Some options are required in combination with other options.

Availability of some features may be subject to a slight delay.



Wheels: left to right
Optional 15-inch cast-aluminum wheel
Optional 14-inch Polycast wheel
Optional 15-inch Deluxe wheel cover

 **MERCURY.** The shape you want to be in.

MERCURY SABLE
LINCOLN-MERCURY DIVISION 

Litho in USA (934 M) 10-85 Form No P-9604