

# 200

SERIES



APPROVED  
ACCESSORIES



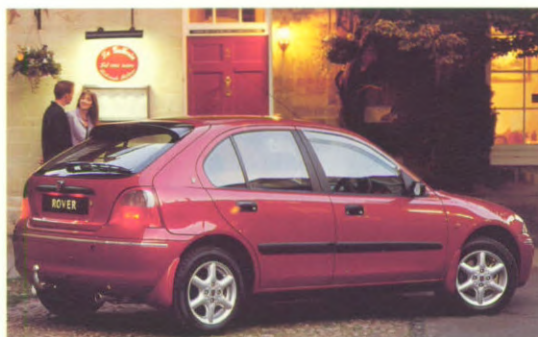
ABOVE ALL, IT'S A ROVER



# 200

## S E R I E S

THERE IS A COMPREHENSIVE RANGE OF ACCESSORIES AVAILABLE FOR YOUR NEW ROVER 200, SOME OF WHICH ARE UNIQUE TO THE MODEL. THIS ENSURES THAT THE MAJORITY OF YOUR ACCESSORY REQUIREMENTS CAN BE CATERED FOR AND THAT YOU CAN BE CONFIDENT THESE PRODUCTS REFLECT THE SAME CARE AND ATTENTION TO DETAIL THAT MAKES THE ROVER NAME SYNONYMOUS WITH QUALITY AND REFINEMENT.



---

4 - 5

COMFORT & PRACTICALITY

---

6 - 7

SAFETY & SECURITY

---

8 - 9

ROVER 200 ACCESSORIES

---

10 - 11

CARRYING & TOWING

---

12 - 13

STYLING

---

14

AUDIO

---

APPROVED

ACCESSORIES



## COMFORT & PRACTICALITY

ROVER HAVE DESIGNED A RANGE OF APPROVED ACCESSORIES FOR YOUR NEW ROVER 200 TO MAKE YOUR DRIVING ENVIRONMENT MORE COMFORTABLE AND ENJOYABLE.

FROM STYLISH MUDFLAPS TO THE LUXURY OF LEATHER INTERIOR TRIM, THE ROVER ACCESSORY RANGE WILL MEET ALL OF YOUR PRACTICAL NEEDS.



Fabric Mats  
Standard  
- Ash Grey



Fabric Mats  
Premium  
- Ash Grey



Fabric Mats  
Standard and Premium  
- Smoke Stone

### FABRIC MATS (SET OF 4)

Two stylish ranges available – standard and premium – both with the exclusive Rover branding. All fabric mats are colour matched to interior trim, flame resistant, waterproof and cut for an exact fit.

Ash Grey – Standard	EAH 102930 LNF
Smoke Stone – Standard	EAH 102930 LPR
Ash Grey – Premium	EAH 103060 LNF
Smoke Stone – Premium	EAH 103060 LPR

### RUBBER MATS (PAIR)

Premium quality Rover branded rubber mats which are tough, durable and cut for an exact fit. Front and rear pairs available.

Front (Pair)	EAH 102860 LNF
Rear (Pair)	EAH 102920 LNF

### MUDFLAPS (PAIR)

Durable black moulded mudflaps designed to protect against dirt, stones and reduce water spray. Available in front and/or rear pairs.

Front Mudflaps (Pair) – Black*	CAS 100270 PMA
Rear Mudflaps (Pair) – Black*	CAT 100540 PMA

\*Suitable for painting



Mudflaps - rear



Mudflaps - front



Flexible Load Liner

#### FLEXIBLE LOAD LINER

A nylon loose liner which is flame retardant and machine washable. Can be folded or rolled up for easy storage.

Flexible Load Liner EBF 100170



#### DRIVER'S SEAT PROTECTOR

Flame retardant and machine washable nylon loose seat protector.

Seat Protector VUK 10001



Drivers Seat Protector



Rear Seat Cover

#### REAR SEAT COVER

Nylon loose cover, to fit over the rear seat. An ideal way to protect against dirt, mud, etc. Can be folded or rolled up for easy storage. Note: Rear centre seat belt cannot be used when cover is in place.

Rear Seat Cover VUK 100020

#### DOG GUARD

Keeps your dog/s separate from the passenger compartment. Easy to fit and remove. Can not use with rear parcel shelf.

Dog Guard ESH 100140



Dog Guard

#### Door Wind Deflectors



Sunroof Deflector

#### DOOR WIND DEFLECTORS AND SUNROOF DEFLECTOR

Reduces wind noise. Manufactured from stylish durable tinted moulded acrylic.

Door Wind Deflectors (3 Dr only) - Front Pair VUB 100130

Door Wind Deflectors (5 Dr only) - Front Pair VUB 100140

Sunroof Deflector\* EFJ 100180

\*Do not fit sunroof deflector with roof bars.

#### CUP HOLDERS

Durable cup holder designed to fit into the driver and passenger door bins. Ideal for long journeys.

Cup Holder - Driver's side VTJ 100010

Cup Holder - Passenger's side VTJ 100020



Cup Holders

Rigid Load Liner



#### RIGID LOAD LINER

A tailor made robust liner with anti-slip mat and Rover branding. A practical way to protect your rear loadspace against dirt, mud, etc.

Rigid Load Liner EBF 100180

#### WINDSCREEN PROTECTOR

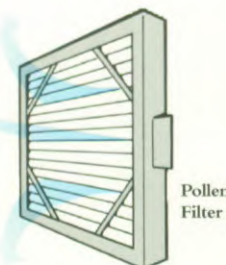
Rover branded nylon elasticated loose cover which fits onto the car windscreen to prevent against frost and harsh weather conditions. Can also be used as a sun protector.

Windscreen Protector VUS 100010

#### POLLEN FILTER

Easy to fit filter, an ideal product for asthma and hay-fever sufferers.

Pollen Filter JKY 100020



Windscreen Protector

#### REAR HEAD RESTRAINTS

Easy to fit colour matched fabric and leather head restraints for rear passenger comfort.

Rear Head Restraints - Ash Grey (Fabric) VUB 101890 LNF

Rear Head Restraints - Smoke Stone (Fabric) VUB 101910 LPR

Rear Head Restraints - Smoke Stone (Leather) VUB 101900 LPQ

Rear Head Restraints - Ash Grey (Leather) VUB 102060 LNF



Rear Head Restraints

#### LEATHER INTERIOR TRIM

For ultimate luxury - premium leather interior trim which includes leather seats, head rests, rear map pockets and rear seat arm rest. Available in two colours to match interior trim. Does not include leather door panels.

Leather Interior Trim - Smoke Stone VUB 101760 LPQ

Leather Interior Trim - Ash Grey VUB 101760 LNF

\*Allow 28 days for delivery

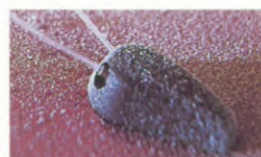


Leather Interior Trim

#### HEATED WASHER JETS

Powerful washer jets which are heated as soon as the ignition is switched on so that they are defrosted for immediate use.

Heated Washer Jets VUB 100220



Heated Washer Jets



## SAFETY & SECURITY

ALL ROVER 200 SAFETY & SECURITY ACCESSORIES  
HAVE BEEN EXTENSIVELY TESTED AND  
MANUFACTURED TO MEET INDUSTRY  
STANDARDS BEFORE THEY ARE GIVEN THE ROVER  
SEAL OF APPROVAL, OFFERING YOU COMPLETE  
PEACE OF MIND.

### CHILD SEAT

Child Seat – Suitable for children weighing between 20 & 40 lbs (9–18 kgs) and aged between 9 months and 4.5 years.

Child Seat EVY 100060  
Child Seat Replacement Cover EWR 100450



Child Seat

### BOOSTER CUSHION

Booster Cushion – Suitable for children between 33 & 80 lbs (15–36 kgs) and aged between 3–11 years. Removable washable cover and approved to ECE R4002.

Booster Cushion EVY 100040



Booster Cushion

### CARRYTOT

Suitable from birth – 9 months (0–9 kgs).

▲ Not for front seat use in any vehicle having passenger side airbag fitted.

Carrytot (Mouse pattern) EVY 100050 M  
Carrytot (Bear pattern) EVY 100050 B

Carrytot







First Aid Kit



Bulb Kit

Fire Extinguisher



Rechargeable Torch

Roadside Lamp/Torch & Warning Triangle



#### ROADSIDE LAMP/TORCH

A versatile roadside lamp with stand and a flashing amber light. Offers a self-test facility and a high density white torch light. Essential equipment for night-time motoring. Requires 5 R20 1.5V batteries.

Roadside Lamp/Torch VUT 100010

#### FIRST AID KIT

The Rover First Aid Kit includes a number of bandages and dressings that can be used in the case of an emergency. No Rover 200 should be without it. Both kits include basic first aid instructions.

First Aid Kit KEF 10001

First Aid Kit\* KEF 100020

\*St. John Ambulance Approved

#### BULB KIT

Covers all interior and exterior bulbs and also contains the unique Rover UV bulbs specially designed for the polycarbonate headlamps.

Bulb Kit VUB 100170

#### FIRE EXTINGUISHER

(ROVER BRANDED)

Fitted to the inside of the front passenger door sill. Supplied with fitting kit. 1.36kg – dry powder.

Fire Extinguisher KDB 10001

#### RECHARGEABLE TORCH

Small rechargeable torch which locates in the glove compartment handy for reading maps etc, at night. Recharges in situ with the engine running.

Rechargeable Torch VUB 100200



Continental Headlamp Convertors

#### WARNING TRIANGLE

A reflective warning triangle which every driver should possess in the event of a motoring emergency. Available in a rectangular storage box which can be strapped into the boot.

Warning Triangle KCC 100030

#### LOCKING WHEEL NUTS (STEEL/ALLOY)

Easy to fit, practical solution to deter the would-be thief. Fitting kit included.

Locking Wheel Nuts (Steel) RRB 10002

Locking Wheel Nuts (Alloy) RRB 100140

Locking Wheel Nut Covers RRJ 10001



Locking Wheel Nuts

#### \*ZERO\*

#### EXTERIOR TEMPERATURE WARNING INDICATOR

This new product is designed to monitor slight external temperature changes which are not apparent from within your vehicle. The temperature information is immediately displayed on a stylish red/green LED mounted on the fascia.

Green +5°C – Safe driving conditions

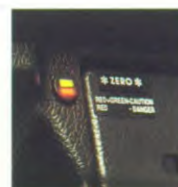
Red/Green +2°C – Caution

Red 0°C – Danger

Although no substitute for careful driving and good observation, the additional sensory information provided by \*Zero\* should be used to complement your driving skills.

Used extensively by Essex Police.

\*ZERO\* Exterior Temperature Warning Indicator VUB 100230



#### FOGLAMPS (PAIR)

Designed specifically for the front bumper. Enhances both visibility in foggy conditions and your vehicle's appearance. Bezels are suitable for painting.

Foglamps (Pair) XBQ 100650

#### CONTINENTAL HEADLAMP CONVERTORS

A necessity for driving in Europe.

The set consists of a pair of headlamp covers which change the direction of the headlight beam, whilst protecting your headlamps.

Continental Headlamp Convertor Set VUB 100200

#### SNOW CHAINS

Easy to fit snow chains specifically designed by Rover.

Snow Chains\* VUJ 10002

\*For tyre sizes 175/65 x 14

#### ULTRASONIC PARKING AID

An essential aid to enable easier parking and prevention of accidents. Two sensors are discreetly fitted into the rear bumper which send out ultrasonic waves to calculate the distance between the bumper of the car and the closest object. When reversing, the parking aid emits a high pitched beep within the car which increases in frequency on approach to the object. In addition there is an LED display panel for the hard of hearing located inside the car above the rear window which also indicates proximity.

Green – 3 metres away

Amber – 1.75 metres away

Red – 0.75 metres away

Ultrasonic Parking Aid VUB 101090

#### Zero Exterior Temperature Warning Indicator

#### Security Box



#### SECURITY BOX

A secure way of protecting your valuables in the car. Requires installation kit.

Security Box ESM 10001

Security Box Installation Kit ESK 100320

#### Headlamp Covers



#### Foglamp Covers

#### HEADLAMP AND FOGLAMP COVERS

Cut the cost of replacing lamps with the Rover clip-on headlamp and foglamp covers which protect the lenses against stone chips etc.

Headlamp Covers XBV 100390

Foglamp Covers XBV 100500



Snow Chains

#### Ultrasonic Parking Aid



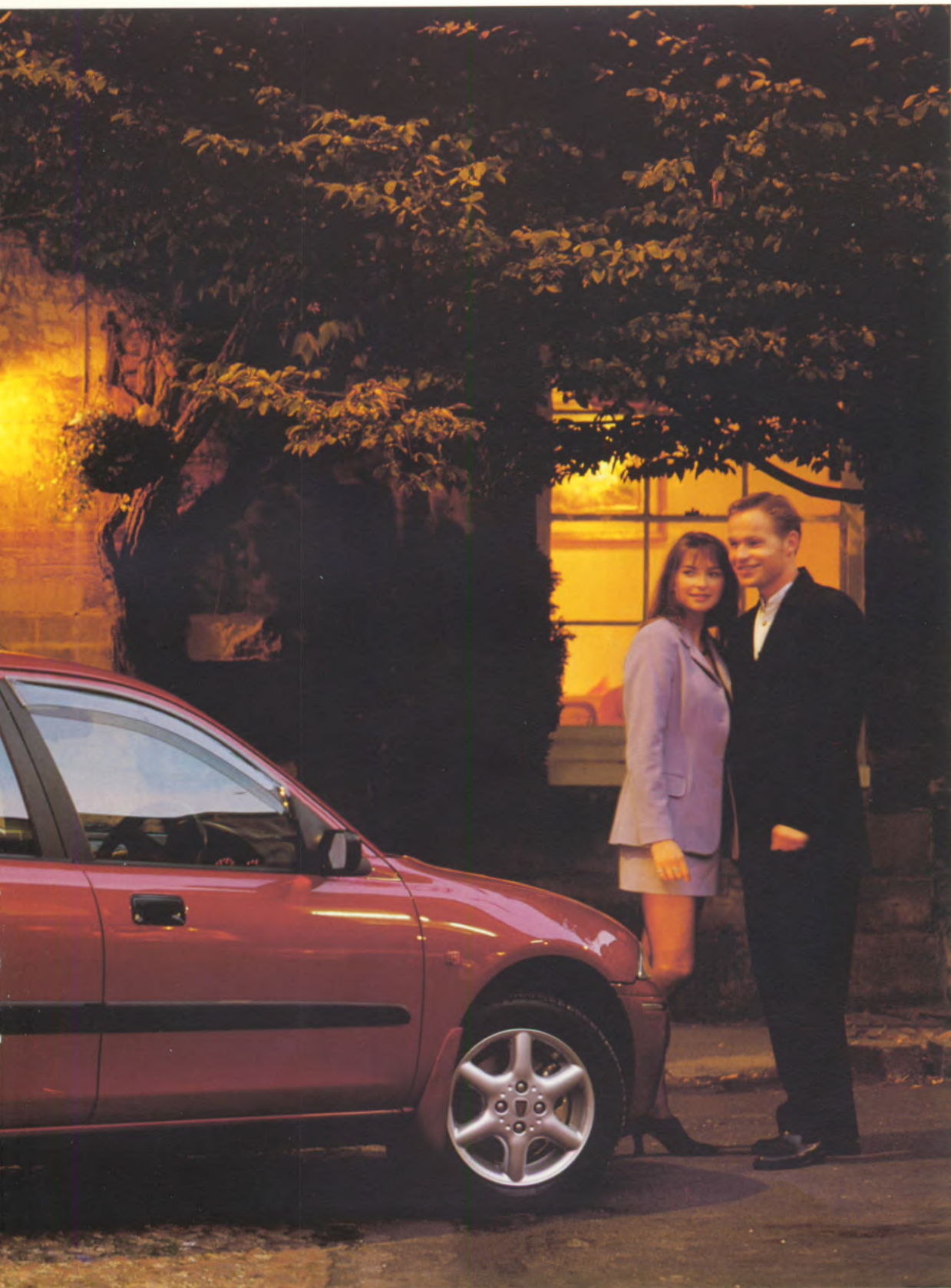


## ROVER 200 ACCESSORIES

---







## ROVER 200 ACCESSORIES

### THE ROVER WAY OF LIFE

The car shown in this picture is a Rover 216 SLi featuring the following accessories:

- Alloy wheels
- Locking Wheel Nuts
- Mudflaps
- Ultrasonic Parking Aid
- Detachable Towbar
- Single Towing Electrics
- Auxiliary Towing Electrics
- Exhaust Finisher
- Door Wind Deflectors



ABOVE ALL, IT'S A ROVER



## CARRYING & TOWING

TRAVELLING HAS NEVER BEEN EASIER, WITH OUR EXTENSIVE RANGE OF QUALITY CARRYING & TOWING ACCESSORIES DESIGNED SPECIFICALLY FOR YOUR ROVER 200. FROM CYCLE CARRIERS TO TOWBARS OUR RANGE OF ACCESSORIES CAN ACCOMMODATE ANY LIFESTYLE.

### FIXED AND DETACHABLE TOWBARS

Swan neck fixed towbar and discreet detachable towbar with a choice of single and auxiliary electrics.

Max. towing weight	— 1000kg
Towing hitch down load	— 70kg
Fixed Towbar	KNB 100280
Detachable Towbar	KNB 100290
Single Towing Electrics	YWJ 100810
Auxiliary Towing Electrics	YWJ 100700



Fixed Towbar



Detachable Towbar



Towing Stabiliser & Clamp

### TOWING STABILISER AND STABILISER CLAMPS

A necessity for towing large items such as caravans. The stabiliser restricts the movement of the towed item allowing easier and safer driving and towing. Requires relevant stabiliser clamp. Note: Drivers should never attempt to tow any item during harsh weather conditions or high winds.

Towing Stabiliser	KNC 10001
Stabiliser Clamp (Fixed Towbar)	KNC100070
Stabiliser Clamp (Detachable Towbar)	KNC 100090



Tow Rope

### TOW ROPE

A strong durable Rover branded tow rope which can be clipped onto the car for towing.

Tow Rope	VOZ 100010
----------	------------



Roof Bars



Side Support Roof Clamps

### ROOF BARS

The essential base for all Rover 200 approved carrying systems. Locks onto your car. Includes standard lashing straps.

Roof Bars (3 door) CAB 100350  
Roof Bars (5 door) CAB 100360

### CONVERSION KITS

These kits enable you to transfer your roof bars from a 3 door Rover 200 to a 5 door or from a 5 door to a 3 door.

Conversion Kit for 3dr to 5dr CAP 100190  
Conversion Kit for 5dr to 3dr CAP 100200

### SIDE SUPPORT ROOF CLAMPS

Set of 4 side support clamps which fit onto the roof bars to secure items transported on top of the car. Should be used with Lashing Straps.

Side Support Roof Clamps (Pair) CAU 100500

### LOAD CARRIER

Ideal for larger roof mounted loads. Use with integral lashing straps for ease of securing.

Load Carrier CAN 10004

### CYCLE CARRIER

Can accommodate mountain, racing or touring bicycles in an upright position. Lockable steel construction. Use with roof bars.

Cycle Carrier CAN 10002

### SKI CLIPS

(1 PAIR)

Key locking, strong moulded plastic ski clip. Secure location for up to 2 pairs of snow or 1 pair of water skis. Use with

roof bars. (Maximum 2 pairs).

Ski Clips (1 Pair) CAN 10005



Ski Clips

### TOWING MIRROR

Extended mirror which offers full mirror movement for improved visibility when towing.

Towing Mirror  
CRB 107670



Towing Mirror



GTi Box

### ROOF BOXES

For all roof boxes use the Rover approved roof bars. All roof boxes are lockable for total security.

### GTi BOX

Max dimensions

L-1350 W-800 H-300

GTi Box CND 10002

### AUTO BOX

Max dimensions

L-1400 W-960 H-400

Auto Box CAK 10004



Auto Box

### TOURING KIT BAG

Waterproof nylon roll out bag containing various pockets for storing your travelling products such as maps, first aid kit and warning triangle.

(Contents not included)

Touring Kit Bag VUB 100290



Touring Kit Bag

### FLOOR AND REAR BOOT

#### LUGGAGE NETS

Elasticated luggage nets which fit to the floor and rear of your Rover 200 boot.

An ideal way of preventing your boot contents such as shopping bags or luggage from slipping and emptying into the boot area.

Rear Luggage Net ESK 100230

Floor Luggage Net ESK 100350



Floor and Rear  
Boot Luggage Nets

### LASHING STRAPS

Strong, durable straps with which to secure your luggage or other items to the roof bars on your Rover. Should be used with the side support roof clamps.

Lashing Strap (3.5M) CAR 10002

Lashing Strap (5.0M) CAR 10003



Lashing Straps



## STYLING

---

ROVER OFFER A SELECTION OF STYLING  
ACCESSORIES WHICH ALLOW YOU TO  
PERSONALISE YOUR NEW ROVER 200, FURTHER  
ENHANCING THE SPORTING STYLE AND  
REFINEMENT.







Leather  
Steering Wheel



Optional  
In Car Entertainment  
Controls

#### LEATHER STEERING WHEEL

Sports steering wheel covered in premium leather for added refinement. With or without In Car Entertainment volume controls.

Leather Steering Wheel  
(without ICE controls)

QTB 101290 PMP

Leather Steering Wheel  
(with ICE controls)

QTB 101400 PMP

#### ALLOY WHEEL (6 SPOKE)

A stylish sporty silver alloy wheel which is guaranteed to make heads turn.

Alloy Wheel (6 Spoke)

RRC 108940 MNH

Centre Cap

DTC 10054 MNH

Wheel Nut

RRD 100310

Wheel Dimension 5.5J x 14



Alloy Wheel

#### LEATHER GEAR KNOB

Gear Knob covered in premium leather designed to add refinement to your Rover 200. Designed to co-ordinate with the Leather Steering Wheel.

Leather Gear Knob

UKJ 100350 PMP



Leather  
Gear Knob

#### REAL WOOD VENEER KIT

Additional Real Wood veneer designed by Rover to further enhance the interior of your car. Designed for all new Rover 200's with or without electric windows.

Wood Effect Veneer Kit  
(without electric windows)

VUB 101780

Wood Effect Veneer Kit  
(with electric windows)

VUB 101510



Real Wood Veneer Kit



#### EXHAUST FINISHER

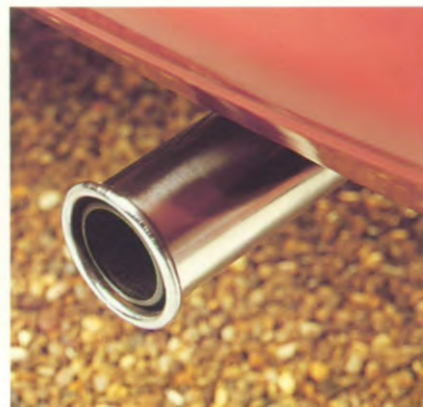
Stainless steel exhaust finisher to give your Rover 200 a sporty look.

Exhaust Finisher

GEX 12061

Exhaust Finisher Screw

SH 106121



Exhaust  
Finisher



## AUDIO

ROVER UNDERSTAND THE IMPORTANCE OF HAVING A HIGH QUALITY IN-CAR ENTERTAINMENT SYSTEM. WITH THIS IN MIND, ROVER HAVE INTRODUCED A NUMBER OF AUDIO ACCESSORIES DESIGNED TO MAKE YOUR JOURNEY MORE PLEASURABLE AND RELAXING.



### 6 DISC AUTOCHANGER

#### + HEAD UNIT

This CD compatible kit should be used where a Rover R660 or R760 non-CD compatible radio/cassette player has been fitted as standard. The kit comprises a Rover CD compatible radio/cassette player and a 6 Disc Autochanger which is fitted under the front passenger seat. The Autochanger can hold up to 6 Discs at a time for non-stop continuous play. The kit should be fitted with the installation kit and data cable.

#### 6 Disc Autochanger + Head Unit

VUW 100170  
Installation Kit VUD 100350  
Data Cable XQL 10032

### 6 DISC AUTOCHANGER

#### + RDS HEAD UNIT

This CD compatible kit should be used where a Rover R660 or R760 non-CD compatible radio/cassette player has been fitted as standard. The kit comprises a Rover CD compatible radio/cassette player with the RDS-EON feature and a 6 Disc Autochanger which is fitted under the front passenger seat.

The Autochanger can hold up to 6 Discs at a time for non-stop continuous play. The kit should be fitted with the installation kit and RDS data cable.

6 Disc Autochanger + RDS Head Unit  
VUD 100190  
Installation Kit VUD 100350  
Data Cable (RDS) AMR 3460

### RDS-EON

The Rover R860 CD compatible radio/cassette player which is used for RDS CD upgrades includes the feature RDS-EON.

This feature performs three important functions:

1. The radio will automatically display the name of the station being listened to.
2. The radio will automatically re-tune to receive the strongest signal for the nominated station as the car moves up and down the country.
3. Local traffic information will automatically be received and transmitted by interrupting a tape, CD or radio transmission.

RDS = Radio Data System

EON = Enhanced Other Networks

### 6 DISC AUTOCHANGER

This CD compatible kit should be used where a Rover R860 CD compatible radio/cassette has been fitted as standard. The kit contains a 6 Disc Autochanger which is fitted under the front passenger seat. The Autochanger can hold up to 6 Discs at a time for non-stop continuous play. The kit should be fitted with the installation kit and RDS data cable.

6 Disc Autochanger VUW 100010  
Installation Kit VUD 100350  
Data Cable (RDS) AMR 3460

### REAR SPEAKERS

Rear speakers which fit at either side of the rear parcel shelf in your Rover 200 to give you greater sound quality throughout the car. For a pair of speakers you will need to order 2 speakers and 8 screws.

Rear Speaker XQM 100970  
Screw BNP 4200

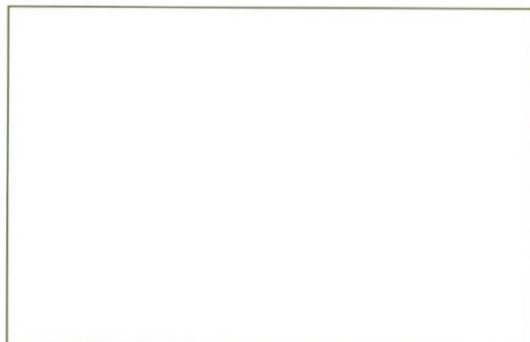
FEATURES	CD UPGRADE VUW 100170	CD UPGRADE VUD 100190	CD AUTOCHANGER VUW 100010
FM/LW/MW Channels	■	■	
CD Compatible	■	■	
CD Controls	■	■	
Security Coded		■	
Removable Security Control Pad	■		
Remote Display		■	
Flashing LED	■		
Power Output	2 x 30 Watts (2 Speakers) 4 x 12 Watts (4 Speakers)	4 x 15 Watts (4 Speakers)	
Number of Presets	36	30	
RDS-EON		■	
Illuminated Controls	■	■	
Auto Reverse	■	■	
Dolby System		■	
Bass Control	■	■	
Treble Control	■	■	
Fader Control	■	■	
Balance Control	■	■	
Chrome/Metal Tape Selector		■	
Auto Store	■	■	
Audio Mute		■	
<b>6 DISC CD AUTOCHANGER</b>			
Hardwire Link	■	■	■
Track Search Function	■	■	■
Random Track Play	■	■	■
Track Scan	■	■	■
Play / Pause Function	■	■	■





FITMENT OF NON APPROVED PRODUCTS  
CAN AFFECT VEHICLE WARRANTY





**Brochure Part No: AKM 623.**

Rover Group Limited is constantly seeking ways to improve the specification, design and production of its products and alterations take place continually.

Whilst every effort is made to produce up to date literature, this Rover Accessories Brochure should not be regarded as an infallible guide to current specifications, nor does it constitute an offer for sale of any particular product.

Distributors and Dealers are not agents of Rover Group Limited and have absolutely no authority to bind Rover Group Limited by any express or implied undertaking or representation.