

# VOLVO

340  
360

















# Introducing Volvo's new range of luxury sedans. Volvo 360 and Volvo 340.

Evolved from the Volvo 300 hatchback Series, the new 2 litre and 1.4 litre Volvo sedans incorporate all the classic Volvo virtues and an impressive array of high-tech components. Which is already enough to put them in a class of their own. But what separates the Volvo 300 Series from other cars is the way that advanced technology and engineering combine to produce cars that excel in space, luxury, comfort and refinement. Cars that set new standards for long-distance cruising. Equally important, they are designed to cruise comfortably into old age. This is just one of the satisfying aspects of owning a Volvo.

## Corner-stones of quality.

Volvo sells quality products with a reputation for longevity. And they come complete with good after-sales service and easy servicing. Volvo's bedrock of quality is based on minute attention to 5 basic precepts, the Volvo corner-stones of quality: Dynamic Safety, or how the car handles on the road. Crash Safety, or the protection offered in a collision. Comfort, which is not only a matter of a comfortable seat to sit on. Reliability, based at Volvo on a never-ending cycle of product improvement.

Value for Money, which gives you more for the price you pay in comparison with others. When it comes to real quality, Volvo clearly has the edge. And Volvo owners have a car that is more rewarding in every sense of the word.

## Volvo 360 GLE.

The new Volvo 360 GLE sedan is an exceptional car in many ways. It shows in the refined elegance of its classic styling and a plush-upholstered interior that simply breathes exclusivity. The supremacy of the 360 GLE is visibly demonstrated by such items as tinted glass all round with an extra windscreen shade-band and the elegant pinstripes along the coachwork. On the road too, the 360 GLE asserts its superiority. It has Volvo's smooth 2 litre fuel-injected engine coupled to a 5-speed gearbox with an economy orientated overdrive top gear, giving a top speed of more than 180 km/h (112 mph) combined with good cruising economy.

## Volvo 360 GLS

In common with the 360 GLE, the Volvo 360 GLS is tastefully designed to offer an outstanding level of refined luxury and ride comfort matched in the unique Volvo way to superb roadholding. Plush upholstery, tinted glass, rear passenger compartment heating... these and other standard items show that no

effort has been spared to make the 360 GLS sedan a luxurious long-distance cruiser. The 360 GLS is powered by Volvo's tough 2 litre carburettor engine and has a 5-speed gearbox as standard.

## Volvo 340 GL.

The standard equipment of the Volvo 340 GL sedan is fully in keeping with their design concept of refined comfort, and even better than some in more expensive models. Good performance matched to good fuel economy is the keynote of the responsive 1.4 litre engine with 5-speed manual gearbox, which has a reliability reputation second to none. Like all the cars in the Volvo 300 Series, the 340 GL sedan is pleasingly quiet on the road - a result of the sleek aerodynamic profile which also contributes to the good fuel economy of the range.

*All models shown in this publication can be delivered in RHD version as well.*

*The models and specifications described and illustrated in this publication may vary slightly in the various markets where Volvo products are sold.*

*The factory reserves the right to make changes at any time, without notice, to prices, colours, material, equipment or specifications and also to discontinue models.*



Pace-setting standards of fast long-distance cruising. In total comfort.

If you are the kind of driver who is very selective about such things as ride comfort, road behaviour and performance, you might well find your ideal in the new Volvo 360 sedans. Designed specifically for fast long-distance cruising in style and total comfort, the Volvo 360 GLE is an impressively luxurious car,

both inside and out. It is even more impressive to drive. Not only because of the supreme satisfaction of putting the 2 litre engine through its paces - from 0-100 km/h (0-60 mph) in 11 seconds and on to a top speed of 180 km/h plus (112 mph plus) but also because of its superior roadholding and supremely comfortable ride qualities. This





it has in common with all the models in the new sedan range. It is one of the results of Volvo's Dynamic Safety concept.

A Dynamic Safety car.  
Relaxed, safe and great fun to drive.

Driving a Volvo 300 sedan is a supremely safe and relaxing experience. And one that never loses its attraction. In every model of the Volvo 300 Series

you'll appreciate how superior roadholding and phenomenal cornering power are combined with predictable handling. To give you an extra margin of driveability. This handling supremacy comes from Volvo's unique Dynamic Safety concept, which means the superior handling of a "forgiving" car with excellent directional stabil-

ity, neutral-to-light understeer, negligible body-roll... plus the ability to stop fast in those fast curves without veering from its line. In a Volvo 300 sedan, Dynamic Safety enables you to rediscover the sheer satisfaction of real motoring.







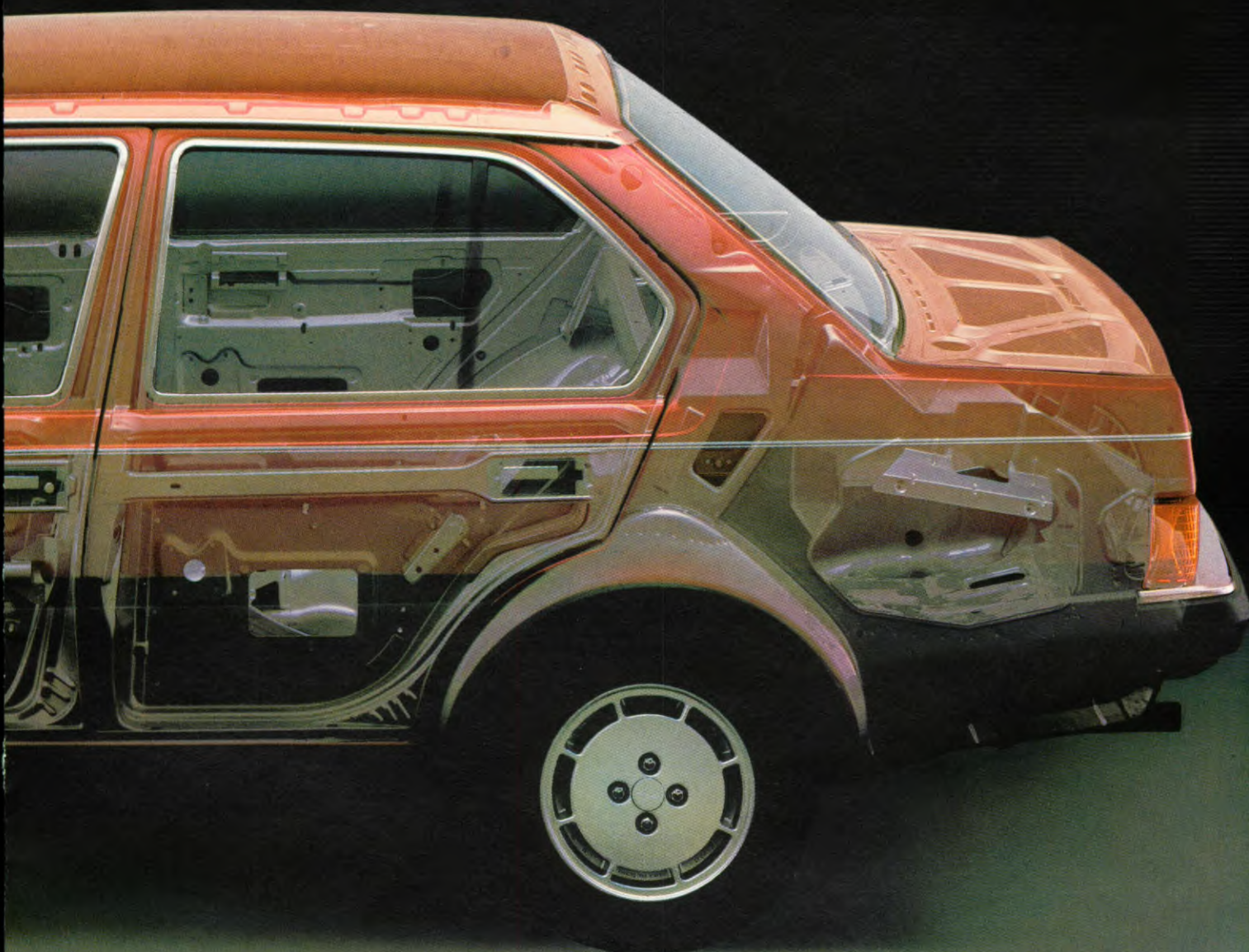
## The best body-guard in the business.

In a Volvo 300 sedan you are literally surrounded by safety for extra protection on the road. Safety in a Volvo 300 sedan starts with the passengers sur-

rounded by a solid steel safety cage and steel bars in the front doors to protect you in a side-on collision. Above you you'll find a roll bar in the roof. The roof pillars themselves are made from twin box-section sheet steel - to protect you in a roll-over crash. Surrounded by solid steel as you are, you may be surprised to hear that the Volvo 300 sedans also have a couple of

weaker points. Intentionally, we would hasten to add. These are the front and rear crumple zones which are designed to collapse gradually in a collision and absorb the shocks - before they can reach the people inside the car. If it comes to the crunch, others will find your Volvo bodyguard a tough customer to deal with. You won't.





High Impact laminated windscreen in all models.

Twice as tough as an ordinary laminated screen, these special windscreens will not splinter or fragment when hit by a stone, so you can finish your journey safely – and have a new one fitted at your convenience.

With safety aforethought.

Should you happen to run into trouble on the road – and the Dynamic Safety concept will help you to avoid a lot of that – you'll find that the Volvo sedans offer you and your passengers an extra margin of protection. Volvo approaches the vital question of safety in the same way that it works on every design aspect of its cars. Thoroughly,

thoughtfully and right down to the last detail. It's another thing for which we have a reputation.

Volvo safety, for example, includes a fire-safe location of the fuel tank – close to the rear axle at a safe distance from the bumper. And check valves in the filler pipe to prevent fuel spillage in a roll-over crash. Safety is an area in which Volvo is the acknowledged expert.



## A shining example of a weather-wise car.

### Beating the weather.

Traditionally, Volvos have an unequalled reputation for beating the weather. Take for example the bodywork. The Volvo 300 sedans have a high degree of built-in corrosion protection even before they receive their 19-stage anti-rust treatment. This comes from the generous use of Zincro Metal® for exposed underbody sections. Or take the inner-cavity rust-proofing and full underbody coating. Done at the Volvo works to Volvo standards – just to be sure of the quality. It all helps to make the Volvo 300 sedans a shining example to others. And helps to keep them that way.

### Beating the economy.

When it comes to value, the Volvo 300 sedans clearly demonstrate their supremacy. Lasting quality runs like a thread through every component. For instance you may notice how long the exhaust system lasts (part of it is aluminized\*). Or that the high-mileage brake pads seem to go on for ever. Some things you may never notice, like the zinc-plated steel brake lines which are coated with PVC to prevent stone damage. It's all part of the extra value for money that you expect from Volvo.

### Unbeatable reputation.

Understandably, our reputation for building cars that last a very long time is rather precious to us. Just as your investment in a Volvo is precious to you. So we make a little extra effort and make sure they are both well protected. That's something else you expect from Volvo.

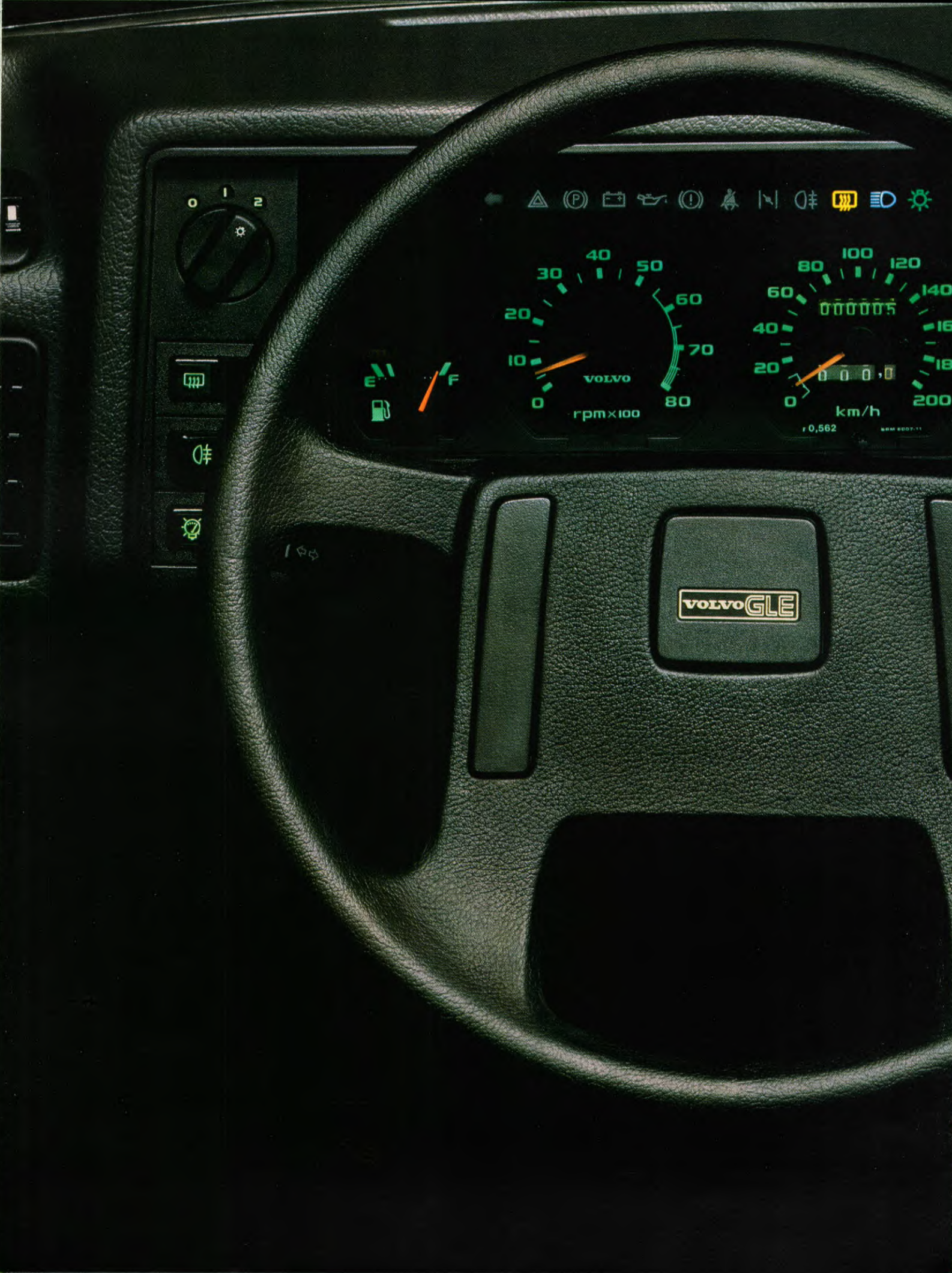
*\*360 models*











VOLVO GLE



## Traditional Volvo comfort in the new 300 sedans.

Space. Comfort. Ease of operation. Three elements that come naturally to the Volvo lineage. And never more so than in the new range of Volvo 340 and 360 sedans, where they add up to one overriding factor. Relaxation. In an atmosphere of uncompromising luxury. Colour-keyed so successfully that you immediately feel right at home. Right, too, is the positioning of the controls, placed exactly where logic tells you they should be. And they can be operated without your attention being distracted from the road – not even for that split second of time that could be so vital. For someone.

### Relaxed and refined.

Relaxation continues in the refined elegance of the plush-upholstered seats with their generous fore-and-aft adjustment range, body-contoured and with Volvo's unique adjustable lumbar support and cushioned head restraints. In the rear, the seats are also shaped to the body and there is a convenient centre arm-rest. In the comfortable world of a Volvo 300 sedan, long journeys somehow seem considerably shorter...

### Effortless control.

The driving area in the Volvo 300 sedans is unusually

### The economy of ergonomics.

The result of all this human engineering, or ergonomics, is that you economize on driving effort. And that helps to make your driving much more enjoyable.

### Comprehensive instrumentation.

The clear-view instruments of the Volvo 300 sedans include an electronic rev-counter, a speedometer with mileage and trip recorder and a fuel gauge with low-level warning lamp. Space is provided for optional instruments, such as a vacuum gauge and an outside temperature gauge – to give you advance warning of icy roads. This full bank of instruments is topped by a row of 13 warning lamps to keep you fully informed of the operating condition of your car. Equally important, you can see everything clearly through the 4-spoke wheel without having to alter your driving position and with your hands still safely on the steering wheel. When you drive a Volvo you remain comfortably in control. All the time.



### By day. By night.

At night too, search-find illumination in the switches gives you pinpoint accuracy so that you can locate the right control straight away. You can also adjust the intensity of the instruments and dashboard lighting to suit personal preference and driving conditions.

comfortable and practical with the most frequently used controls conveniently operated by two multi-purpose steering column stalks – angled upwards for real fingertip action. These stalks actuate the main/dipped beam, headlamp flash, left and right turn (plus tip-touch lane-change mode) and the combined windscreen and headlamp wash/wipe.

For additional convenience you'll also find all models equipped with intermittent wipe-action. Operating the screenwash stalk automatically actuates the windscreen wipers for two or three sweeps.











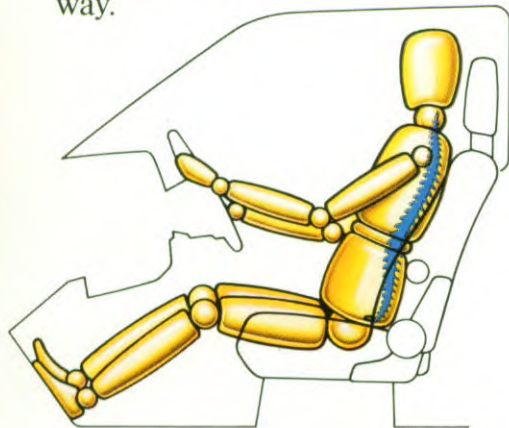
### World-famous seats.

The body-contoured Volvo seats are the result of many years of research and technical development in co-operation with orthopaedic specialists.



Extolled all over the world for their fatigue-banishing properties, the front seats in G-level models are also equipped with the equally famous Volvo lumbar support – so you can adjust the firmness of the back-rest. The driving seats may also be equipped (option) with heating elements which switch on automatically when the temperature drops below +14°C on those cold and damp mornings.

For business and for leisure, your Volvo 300 sedan gives you executive class travel all the way.



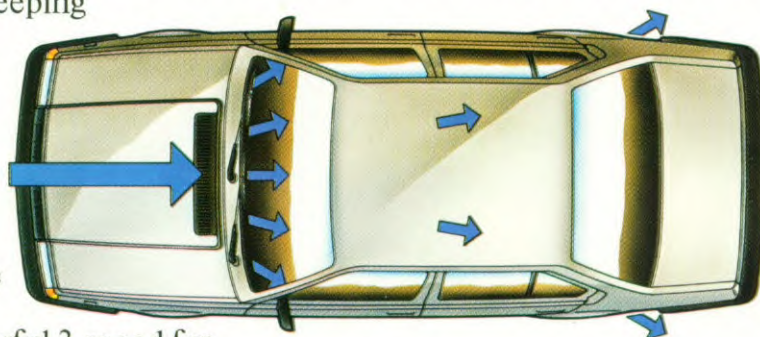
### Interior lighting.

In the Volvo 300 sedans you'll find interior lights precisely where you need them. Courtesy switches in the front doors turn on the interior light in the windscreen header panel, which has a manual control too, and also switch on a light above the ignition switch. You'll find lighting for the ashtray and in the glove-box. In the boot too, lighting is standard.

### Comfortable climate control.

Thirteen air outlets combine with through-flow ventilation to keep you and your passengers comfortably cool in the summer and warm in the winter. If you like to keep a cool head while keeping the rest of your body warm, you'll find fully adjustable fresh air vents in the middle of the dashboard.

A powerful 3-speed fan can boost the airflow for fast demisting. At full boost it changes the air inside the car in less than 30 seconds – at a comfortably low noise level. The refined luxury of the Volvo 300 sedans naturally makes provision for the rear seat passengers: they have their own foot-level heating duct. And for those cold morning starts, the electri-



cally heated rear window rapidly clears away snow.

### Room for comfort. And the equipment to match.

Looking after the needs of the driver and passengers is another Volvo preoccupation. It shows in the exceptionally high level of comfort in the roomy interior of the new sedans.

Comfort that stems from the high level of standard equipment. Such as a precision quartz clock, a cigar lighter in the illuminated ashtray, a remote control door mirror which you can adjust from inside the car...

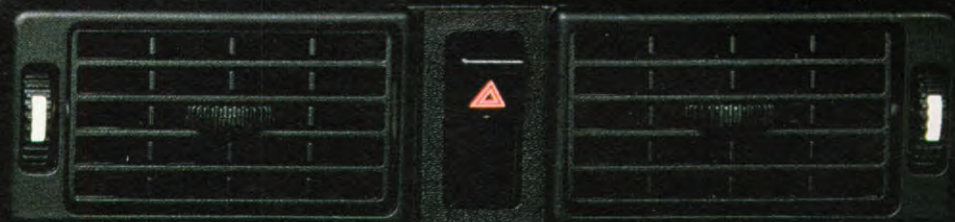
Comfort made complete by design refinements that include a map tray on top of the dashboard and a hinged panel in

the rear centre arm-rest – so that extra long items can be carried safely inside the car.

Equipment, experience and design. They all combine to make the Volvo 300 sedans supremely comfortable cars.

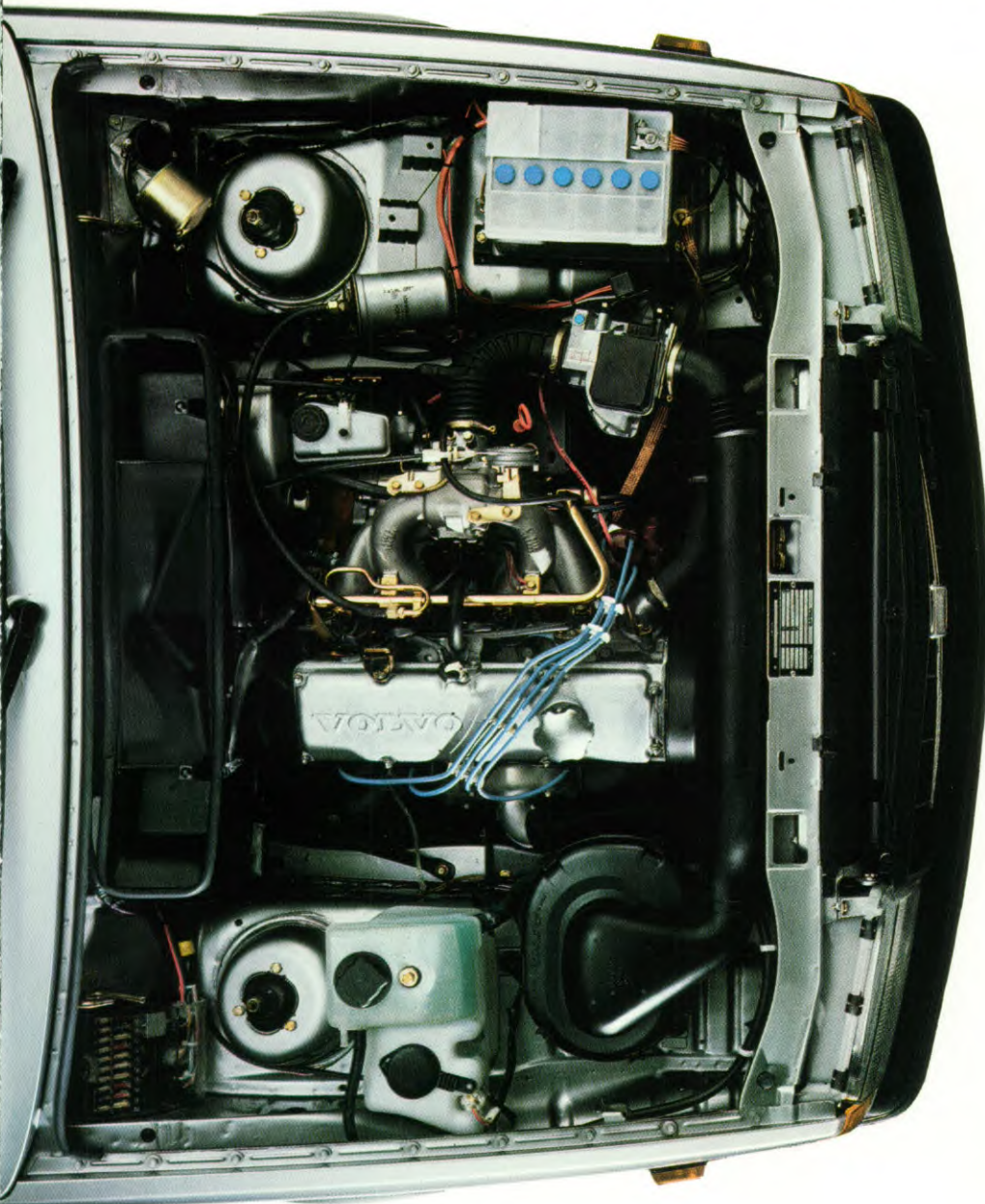
For the driver and for the passengers.







## The heart of the matter: high technology.



### Volvo 360 GLE.

The refined luxury of the 360 GLE is matched every step of the way by the high technology and performance of its technical components. From 0-100 km/h (0-60 mph) takes the fuel-injected 115 hp (85 kW) engine only 11 seconds, and this big 2 litre power takes you on smoothly to a top speed in

excess of 180 km/h (112 mph) – with the economy orientated 5-speed gearbox and the advanced LE-Jetronic fuel injection system efficiently combining excellent performance with good fuel economy. Economy in running costs too, in the form of breakerless electronic ignition – completely maintenance-free. And if you tow, you'll appreciate the big pulling power of the 2 litre engine, which also reduces gearshift frequency in city driving.

### Volvo 360 GLS.

Extra refinement is the overriding theme of the 2 litre models. Like the 360 GLE, the 92 hp (68 kW) carburettor engine in the 360 GLS is supported by unique hydraulic engine mountings which eliminate vibrations inside the car and result in an unusually silent drive line. Ignition timing is looked after by Electronic Ignition Mapping, a computer-controlled system that searches its memory bank of 2048 possible timing points and then matches the ignition timing precisely to the engine operating conditions. The engine in the Volvo 360 GLS responds dynamically to a touch of the throttle and is coupled to Volvo's superbly precise 5-speed gearbox for ultra-smooth performance.

### Volvo 340 GL.

With the supremely reliable 1.4 litre engine, the Volvo 340 GL sedan is proof positive of how good performance can be matched to good fuel consumption. With the 72 HP (53 kW) power unit, fuel costs are cut to the minimum by electronic ignition mapping and a thermo-electric cooling fan – high-tech components that help to put this little giant at the forefront of its class in every respect: durability, low running costs and excellent performance.





### Ride comfort and road-holding.

Getting to grips with road-holding and ride comfort is another specialism that Volvo has perfected in the 300 sedan Series. The exclusive transaxle layout—engine up front, gear-box and final drive against the rear axle—and the advanced suspension specifications give these new sedans exceptional balance and stability. MacPherson struts and the unique properties of the de Dion rear axle contribute to the superior handling and reassuring, positive straight-line feel. They also help to maximize the truly exceptional level of ride comfort of these long-distance cruisers—as too does the long spring travel of the single leaf springs at the rear.

### Superb steering.

The handling of the Volvo 300 sedans is delightfully taut. And totally predictable. In the

wet, in the dry, and on every kind of road surface. This total predictability comes from neutral-to-light understeer and rack and pinion steering gear, which gives precise, light and direct steering with excellent feel. Straight-line stability at high speeds and the ability to hold its line in fast curves are other typical attributes of the Volvo 300 sedans. Steering effort is minimized at all speeds, when parking too. A vibration damper in the steering shaft absorbs vibrations from the road—and helps to keep the driver relaxed and alert.

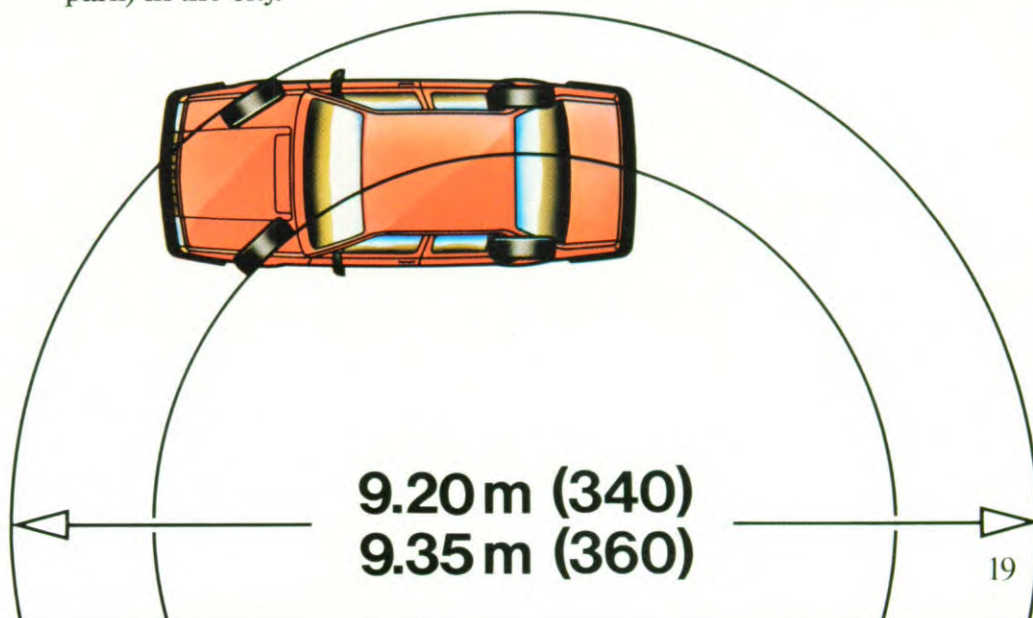
### Tight turning circle.

The Volvo 300 sedans combine big-car appeal with compact outside dimensions, giving these spacious cars surprisingly small turning circles. At 9.20 m for the 340 range and 9.35 m for the 360 sedans you'll find them a delight to drive (and park) in the city.

### Aerodynamics. Not only a measure of economy.

Good aerodynamic styling contributes to the fuel-efficient performance of the Volvo 300 sedans. The 360 GLE, for example, has a drag coefficient of 0.38 Cd and achieves respectable savings in fuel consumption for a 2 litre car. What is more, it does this without economizing on inside space. Streamlined styling also contributes to superior handling, making the new Volvo sedans supremely indifferent to buffeting by cross-winds. It also helps to make them pleasingly silent cars on the road, and so raises the level of ride comfort to an exceptionally high level.

The 300 Series sedans show much of Volvo's mastery of automotive engineering, and how this results in dramatically impressive long-distance cruisers. Unmatched for comfort, ride and roadholding.







## Comfortably accommodating. From start to finish.

When it comes to load space, here too the Volvo 300 sedans assert their superiority, comfortably coping with a genuine 362 litres (12,8 cu. ft) of luggage. The impressive luxury

of the 300 sedans continues right into the boot area, which is carpeted to protect your luggage. And illuminated, to help you find it in the dark. The thoughtful refinement of the new Volvo 300 sedans is also shown by the hinged panel in the rear centre arm-rest. This opens to allow extra long articles to be inserted from the boot, so they can be carried safely inside the car.

Without the inconvenience of having to fit a roof rack.

### Options and accessories.

If you are about to become the owner of a Volvo 300 sedan, you may wish to include a headlamp wash/wipe unit in your order specification, or a Volvo approved child safety seat, or any one of the many quality options and accessories that you'll ever need to personalize





your Volvo to your own requirements of extra comfort and convenience. Genuine Volvo accessories are matched to your Volvo. Equally important, your Volvo is matched to the accessories, with pre-dawn wiring and pre-drilled mounting points to save you installation time and cost. Ask your dealer for a copy of the Volvo 340/360 Accessories Brochure when you order your car.







**They fulfil their promise. In every respect.**

From the outside, on the inside, the new Volvo 300 sedans give a promise of ultimate motoring satisfaction.

In every aspect they express the standard of refined luxury and sophisticated performance that is quite simply expected from a Volvo.

In the 2 litre models you'll appreciate the look and comfort of the plush-upholstered seats. You'll also appreciate the other standard equipment, such as tinted glass all round, remote control door mirror, deep-pile carpeting throughout... Your passengers will appreciate the

rear compartment heating. Out on the road too, this new range of Volvos keeps that promise.

Styled for travel.

On the motorway you'll find high-speed cruising a delightfully comfortable and relaxing experience. A quiet one too. In town you'll appreciate the tight turning circle and low steering effort when parking. Out on those twisting





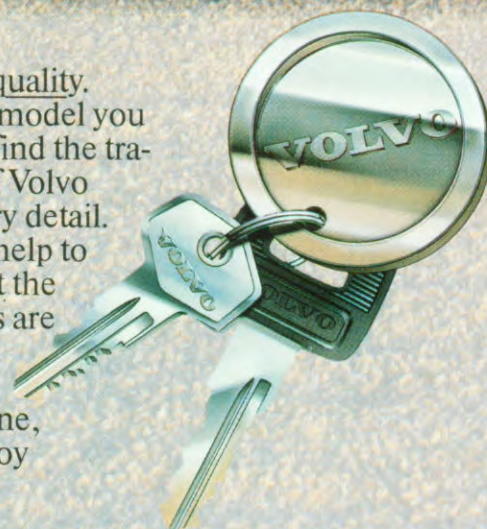
country roads you'll agree that the handling and roadholding are superb.

Powerful economy.

In the 2 litre models you'll discover smooth power matched to an economy orientated 5-speed gearbox.

The key to quality.

Whichever model you choose, you will find the traditional virtues of Volvo embodied in every detail. A test drive may help to convince you that the new Volvo sedans are very special cars. The fact is, the more you drive one, the more you enjoy driving.

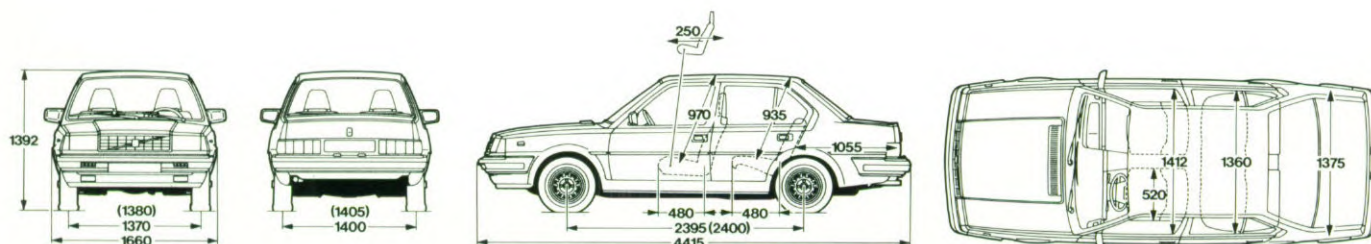




# Technical specifications

Engine	B14	B19A	B19E
Number of cylinders	4	4	4
Engine capacity	1397 cc	1986 cc	1986 cc
Bore and stroke	76x77 mm	88,9x80 mm	88,9x80 mm
Max. output hp DIN at rpm	72/5500	92/5400	115/5700
Max. output kW DIN at rps	53/92	68/90	85/95
Max. torque kgm DIN at rpm	10.7/2500	15.3/3600	16.3/3600
Max. torque Nm DIN at rps	105/42	150/60	160/60
Fuel octane rating	97-98	97-98	97-98
Fuel system	carburettor	carburettor	LE-Jetronic
Ignition system	Electronic Mapping System	Electronic Mapping System	Breakerless electronic
LPG possible	●	●	
<b>Cooling system</b>			
Water cooled, closed circuit system	●	●	●
Capacity	9.26 pints/5.25 ltr	14.08 pints/8 ltr	14.08 pints/8 ltr
Viscous coupling fan		●	●
<b>Electrical system</b>			
Battery capacity	12V/36Ah	12V/45Ah	12V/55Ah
Alternator rating	700W/50A	770W/55A	770W/55A
Starter motor	920W	1400W	1400W
Centrally located fuse box with 20 fuses and relays	●	●	●
<b>Steering gear</b>			
Rack and pinion type	●	●	●
Collapsible column	●	●	●
Turning circle	30'2"/9.20 m	30'6"/9.35 m	30'6"/9.35 m
Turns of steering wheel; lock to lock	4.13	4.40	4.40
Front wheels negative camber		●	●
<b>Fuel tank</b>			
Capacity	9.9 gal/45 ltrs	12.5 gal/57 ltrs	12.5 gal/57 ltrs
<b>Weights (kg)**</b>			
Kerb weight (DIN)	955	1075	1095
Max. permissible	1405	1520	1530
Max. load capacity	472	517	490
Braked trailer max.	1000	1200	1200
Unbraked trailer max.	450	450	450
Max. roof load cap.	50	50	50
<b>Transmissions</b>			
Reduction ratios	M47R	M47R	M47R
	3.705	3.705	3.705
	2.159	2.159	2.159
	1.369	1.369	1.369
	1.000	1.000	1.000
	0.826	0.826	0.826
	3.683	3.683	3.683

## Dimensions in mm.





# Standard and optional equipment

	Volvo 340GL	Volvo 360GLS	Volvo 360GLE
Tinted glass with extra shade-band	●	●	●
Spoiler front	●	●	●
Spoiler rear			●
Fog lights in front spoiler		○	●
Halogen headlamps	●	●	●
Rear warning fog light(s)	●	●	●
Two exterior mirrors	○	○	●
Wide black side protection mouldings			●
Small side protection mouldings	●	●	
Pinstriping	○	○	●
Electrically operated front windows	○	○	●
Heated rear window	●	●	●
Headlamp wipers and washers	○	○	○
Mud flaps front and rear	○	○	○
Lumbar support	●	●	●
Central armrest rear seat	●	●	●
Electrically heated driver's seat	○	○	○
Grab handles front 1	●	●	●
Grab handles rear 2	●	●	●
Parcel shelf colour coordinated	●	●	●
Tunnel console with integrated coinbox and ashtray	●	●	●
Cigar lighter	●	●	●
Central doorlocking	○	○	●
Rear passenger footwell heating	●	●	●
Vanity mirror in co-drivers sun visor	●	●	●
3 point inertia seat belts, front	●	●	●
3 point inertia reel seat belts, rear	○	○	○
Lap belt rear (in middle)	○	○	○
Intermittent wiper	●	●	●
Courtesy light on ignition switch	●	●	●
Hi-low intensity switch dash-illumination	●	●	●
Rev. counter		●	●
Vacuum gauge			○
Outside temp. gauge			○
Quartz clock in dashboard		●	●
Search-find switch illumination	●	●	●
Glove box light	●	●	●
Luggage compartment light	●	●	●
Engine B14.4E 53 kW	●		
Engine B19 A 68 kW		●	
Engine B19 E 85 kW			●
5-speed gearbox M47R	●	●	●
175/70 SR 13 tyres	●	●	●
185/60 HR 14 tyres	○	○	○
Alloy wheel 13 inch	○	○	○
Alloy wheel 14 inch	○	○	○
Sunroof		○	○
● standard    ○ option			

## Warranty

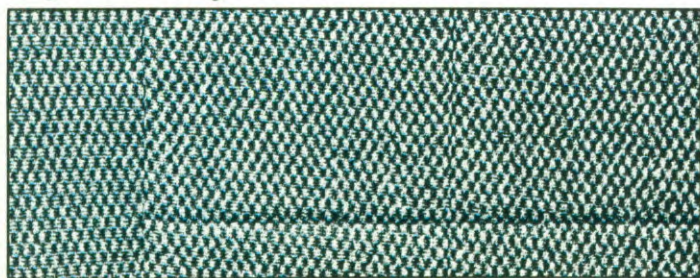
12-month warranty without mileage limitations.

The factory reserves the right to make changes at any time, without notice, prices, colours, material, equipment or specifications and also to discontinue models.

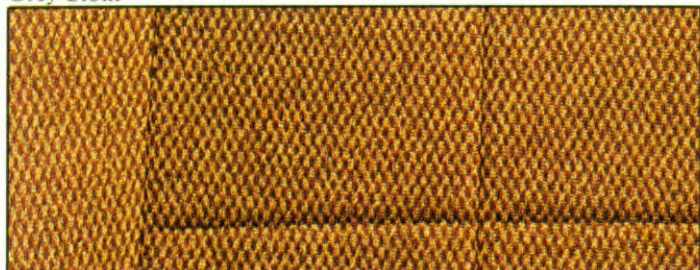
# VOLVO



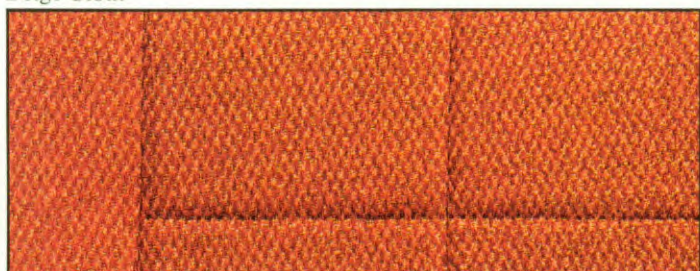
## Upholstery



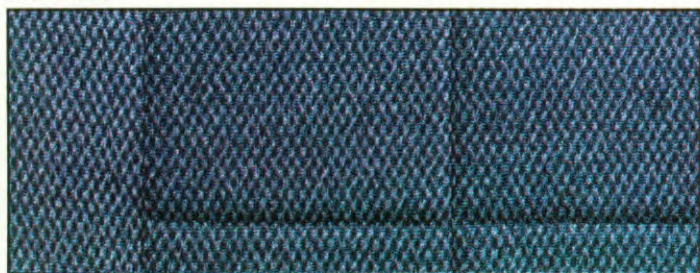
Grey Cloth



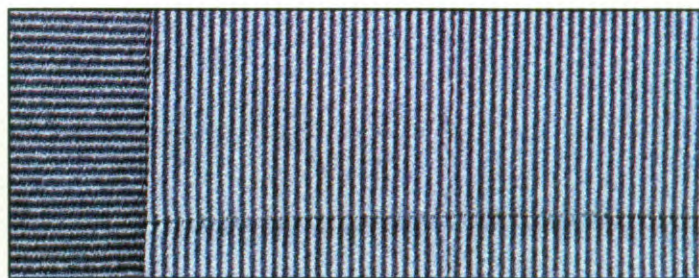
Beige Cloth



Red Cloth



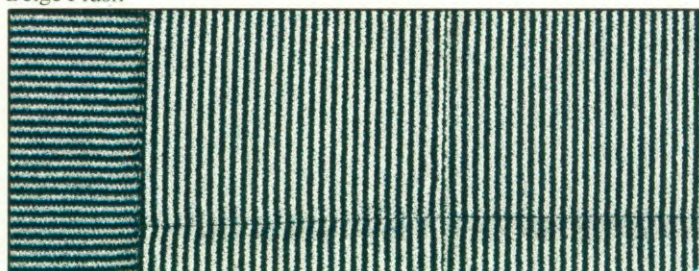
Blue Cloth



Blue Plush



Beige Plush



Black Plush

The high demands placed by Volvo on quality are reflected in the superb paintwork and interior finish. The top quality upholstery material embodied in all Volvo cars provides a superior degree of comfort.

The various combinations of colour and upholstery may differ from country to country. Please contact your Volvo dealer, who will advise you about combinations available.

This information is only valid for model year 1984. The factory reserves the right to make changes at any time without prior notice.

It is not possible to reproduce the exact original colourshades in printed matter.

This applies both to paint finishes and upholstery. Ask your dealer to show you the paint colours and upholstery materials in the sample book.

# VOLVO



## Colours

019 Black



155 Signal red



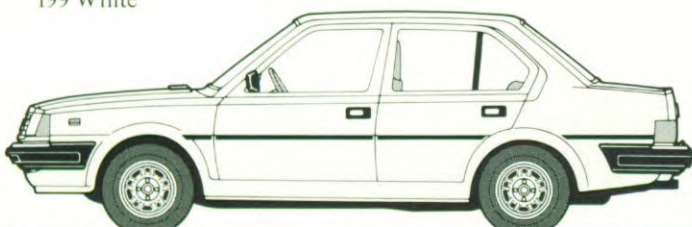
195 Blue grey



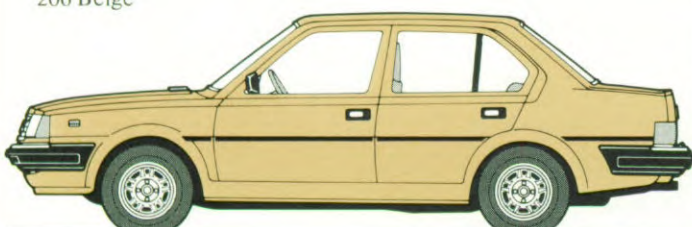
198 Wine red



199 White



206 Beige



207 Dark blue



150 Green metallic



183 Blue grey metallic



184 Silver grey metallic



186 Dark red metallic



187 Anthracite metallic



208 Green grey metallic



209 Light beige metallic





# VOLVO

